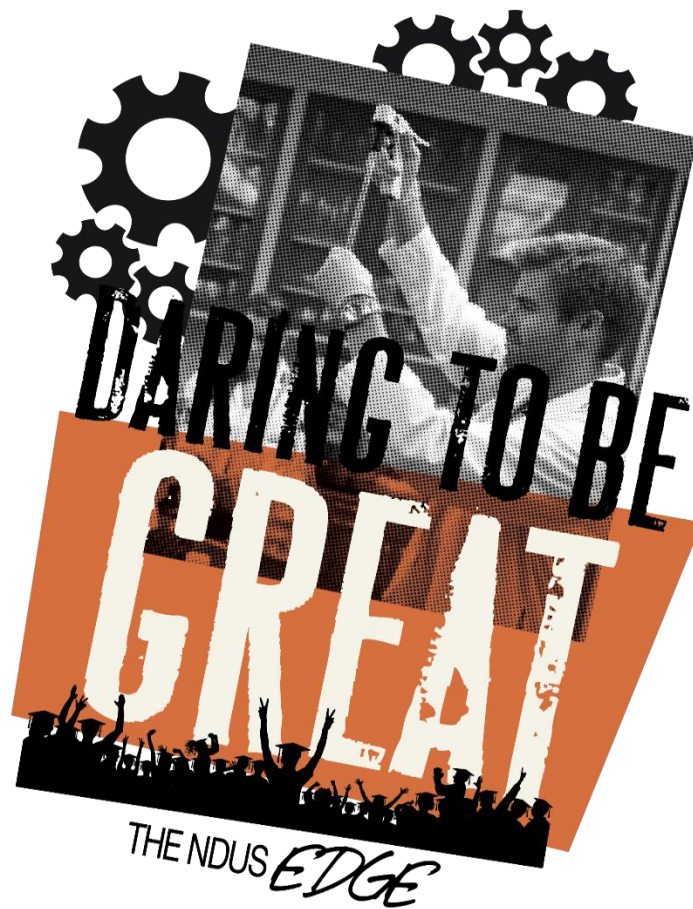


---

# 2016 Fall Enrollment Report

November 2016



Prepared for the  
State Board of Higher Education

---

# **2016 FALL ENROLLMENT**

**PUBLISHED BY:**

**NORTH DAKOTA UNIVERSITY SYSTEM**

**State Capitol  
Bismarck, ND 58505**

*Report prepared by*

**Jennifer Weber, M.S. Ed., NDUS Institutional Research**

## **ACKNOWLEDGMENTS**

This publication reports the enrollment data submitted to the North Dakota University System by North Dakota institutions of postsecondary education. The North Dakota University System acknowledges the efforts of each institution for the attention to detail reflected in the quality of these data.

## Table of Contents

North Dakota State Board of Higher Education.....	1
Institutional Abbreviations for NDUS Campuses .....	2
Purpose of Report .....	3
System Duplicated and Institutional Headcount Enrollments .....	4
Full Time and Part Time Headcount Enrollment.....	5
High School Students Enrolled in College Courses, Beginning Freshmen and Transfer Students, Developmental and Collaborative Course Enrollments .....	6
Full Time Equivalent Enrollments of Part Time and Full Time by Level of Student Based on Total Student Credit Hours .....	7
Trending Headcount, Full Time Enrolled, and FTE of Degree Credit Students .....	8
Headcount, Full Time, and FTE Trending .....	9
Degree Credit Headcount by Instructional Mode.....	10
Degree Credit Headcount Enrollment by E-Learning Delivery Method Degree Credit Headcount Enrollment by E-Learning Delivery Method .....	11
Undergraduate Headcount Enrollment by State .....	12
Graduate and Professional Headcount Enrollment by State .....	13
Headcount Enrollments for North Dakota Students by County of Residence.....	14
Unduplicated Headcount Enrollments <sup>1</sup> for North Dakota Students by County of Residence .....	15
All Enrollments for North Dakota Students by County of Residence .....	16
Headcount Enrollments and Headcount by Tuition Residency Status .....	17
Headcount Enrollment by Age.....	18
Headcount Enrollment by Race.....	19
Glossary .....	20

## North Dakota State Board of Higher Education

Kathleen Neset  
Chair  
Tioga

Don Morton  
Vice Chair  
Fargo

Kevin Melicher, O.D.  
Member  
Fargo

Nick Hacker  
Member  
Bismarck

Mike Ness  
Member  
Hazen

Kari Reichert, J.D.  
Member  
Bismarck

Greg Stemen  
Member  
LaMoure

Ernst Pijning, Ph.D.  
Faculty Adviser  
Grand Forks

Nick Evans  
Student Member  
Fargo

Andy Wakeford  
Staff Adviser  
Devils Lake

---

Mark R. Hagerott, Ph.D.  
Chancellor  
North Dakota University System

## Institutional Abbreviations for NDUS Campuses

BSC	<b>Bismarck State College — Bismarck, ND 58501</b> (BSC is a community college that offers one four-year Bachelor's of Applied Science program achieved by completing two years of coursework beyond a two-year associate in an applied science degree.)
DCB	Dakota College at Bottineau — Bottineau, ND
DSU	Dickinson State University — Dickinson, ND
LRSC	Lake Region State College — Devils Lake, ND
MaSU	Mayville State University — Mayville, ND
MiSU	Minot State University — Minot, ND
NDSCS	North Dakota State College of Science — Wahpeton, ND
NDSU	North Dakota State University — Fargo, ND
UND	University of North Dakota — Grand Forks, ND
VCSU	Valley City State University — Valley City, ND
WSC	Williston State College — Williston, ND



## Purpose of Report

To improve student access and success in North Dakota University System institutions, the State Board of Higher Education has implemented enrollment policies that better reflect the differentiated missions of research universities, regional universities, and community colleges. This report addresses the transition in policy by grouping data by institutional mission.

The North Dakota University System includes:

Two research universities:

- North Dakota State University (NDSU)
- University of North Dakota (UND)

Four regional universities:

- Dickinson State University (DSU)
- Mayville State University (MaSU)
- Minot State University (MiSU)
- Valley City State University (VCSU)

Five two-year community colleges:

- Bismarck State College (BSC)
- Dakota College of Bottineau (DCB)
- Lake Region State College (LRSC)
- North Dakota State College of Science (NDSCS)
- Williston State College (WSC)

As amended January 19, 2012, State Board of Higher Education Policy 440 states as follows,

“Each campus shall report fall and spring semester enrollments for degree credit students based on the number of students enrolled on the twentieth scheduled class day of the fall and spring semesters. "Enrolled" means: the student has registered and paid tuition and fees, made arrangements to pay or a plan for payment is in place; an extension has been granted as provided by Policy 830.1; or, the institution has other documentation the student is registered and in attendance, including, for example, documented class attendance or student access or use of a learning management system or other online services on or after the first scheduled class day of the semester.”

As required by the North Dakota State Board of Higher Education, this enrollment report includes all degree credit enrollments for all NDUS institutions and is consistent with protocols implemented by the Integrated Postsecondary Education Data System

Table 1  
**System Duplicated and Institutional Headcount Enrollments<sup>1</sup>**  
 Fall 2016

<b>Institution</b>	<b>Freshman</b>	<b>Sophomore</b>	<b>Junior</b>	<b>Senior</b>	<b>Graduate</b>	<b>Professional</b>	<b>Total</b>	<b>Collaborative Development Only<sup>2</sup></b>
BSC	1,953	1,794	40	189			<b>3,976</b>	3
DCB	555	256					<b>811</b>	179
LRSC	1,526	421					<b>1,947</b>	5
NDSCS	1,982	1,021					<b>3,003</b>	16
WSC	667	372					<b>1,039</b>	
<b>Subtotal</b>	<b>6,683</b>	<b>3,864</b>	<b>40</b>	<b>189</b>			<b>10,776</b>	<b>203</b>
DSU	450	254	224	453	5		<b>1,386</b>	
MaSU	453	152	174	329	22		<b>1,130</b>	1
MiSU	1,050	558	549	979	276		<b>3,412</b>	
VCSU	424	245	223	403	157		<b>1,452</b>	
<b>Subtotal</b>	<b>2,377</b>	<b>1,209</b>	<b>1,170</b>	<b>2,164</b>	<b>460</b>		<b>7,380</b>	<b>1</b>
NDSU	2,787	2,830	2,575	3,818	2,082	340	<b>14,432</b>	
UND	2,639	2,498	2,101	4,017	2,872	521	<b>14,648</b>	
<b>Subtotal</b>	<b>5,426</b>	<b>5,328</b>	<b>4,676</b>	<b>7,835</b>	<b>4,954</b>	<b>861</b>	<b>29,080</b>	
<b>NDUS Total</b>	<b>14,486</b>	<b>10,401</b>	<b>5,886</b>	<b>10,188</b>	<b>5,414</b>	<b>861</b>	<b>47,236</b>	<b>204</b>

**Data Definitions:**

<sup>1</sup>**Headcount Enrollment** - A student counted as one enrollment in degree credit courses as of the 20th scheduled day of class.

<sup>2</sup>**Collaborative Development Only** - A student who enrolls in a course at a NDUS institution other than his/her home institution for the purpose of completing developmental courses only. These students are non-degree seeking students at the institution at which they are taking collaborative developmental courses. Students in this category are not included in the official headcount because of their non-degree status.

**Sources:**

Campus Solutions>Student Records>Enrollment Report>Headcounts and FTE Enrollments (NDUH2SRA)

Campus Solutions>Student Records>Enrollment Reports>Development Course Enrollments (NDU02SRY)

As of 09.20.2016



Table 2  
**Full Time and Part Time Headcount Enrollment<sup>1</sup>**  
 Fall 2016

Institution	Freshman		Sophomore		Junior		Senior		Graduate		Professional		Total	
	Full Time <sup>2</sup>	Part Time <sup>3</sup>	Full Time	Part Time	Full Time	Part Time	Full Time	Part Time	Full Time	Part Time	Full Time	Part Time	Full Time	Part Time
BSC	1,070	883	1,112	682	12	28	47	142					2,241	1,735
DCB	205	350	139	117									344	467
LRSC	284	1,242	217	204									501	1,446
NDSCS	999	983	754	267									1,753	1,250
WSC	342	325	278	94									620	419
<b>Subtotal</b>	<b>2,900</b>	<b>3,783</b>	<b>2,500</b>	<b>1,364</b>	<b>12</b>	<b>28</b>	<b>47</b>	<b>142</b>					<b>5,459</b>	<b>5,317</b>
DSU	218	232	216	38	173	51	305	148		5			912	474
MaSU	151	302	137	15	130	44	194	135	1	21			613	517
MiSU	413	637	459	99	461	88	688	291	111	165			2,132	1,280
VCSU	173	251	212	33	162	61	251	152	4	153			802	650
<b>Subtotal</b>	<b>955</b>	<b>1,422</b>	<b>1,024</b>	<b>185</b>	<b>926</b>	<b>244</b>	<b>1,438</b>	<b>726</b>	<b>116</b>	<b>344</b>			<b>4,459</b>	<b>2,921</b>
NDSU	2,487	300	2,674	156	2,334	241	3,185	633	665	1,417	335	5	11,680	2,752
UND	1,844	795	2,284	214	1,875	226	2,824	1,193	1,229	1,643	520	1	10,576	4,072
<b>Subtotal</b>	<b>4,331</b>	<b>1,095</b>	<b>4,958</b>	<b>370</b>	<b>4,209</b>	<b>467</b>	<b>6,009</b>	<b>1,826</b>	<b>1,894</b>	<b>3,060</b>	<b>855</b>	<b>6</b>	<b>22,256</b>	<b>6,824</b>
<b>NDUS Total</b>	<b>8,186</b>	<b>6,300</b>	<b>8,482</b>	<b>1,919</b>	<b>5,147</b>	<b>739</b>	<b>7,494</b>	<b>2,694</b>	<b>2,010</b>	<b>3,404</b>	<b>855</b>	<b>6</b>	<b>32,174</b>	<b>15,062</b>

**Data Definitions:**

<sup>1</sup>**Headcount Enrollment** - A student counted as one enrollment in degree credit courses as of the 20th scheduled day of class.

<sup>2</sup>**Full Time** – Undergraduate students enrolled in 12 or more credit hours or graduate and professional students enrolled in 9 or more credit hours (as of the 20th scheduled day of class).

<sup>3</sup>**Part Time** – Undergraduate students enrolled in less than 12 credit hours or graduate and professional students enrolled in less than 9 credit hours (as of the 20th scheduled day of class).

**Sources:**

Campus Solutions>Student Records>Enrollment Report>Headcounts and FTE Enrollments (NDUH2SRA)

As of 09.20.2016

Table 3

**High School Students Enrolled in College Courses, Beginning Freshmen and Transfer Students, Developmental and Collaborative Course Enrollments<sup>1</sup>**  
Fall 2016

Institution	High School Students Enrolled in College Courses <sup>2</sup>			New Undergraduate Student Enrollments <sup>3</sup>		Developmental <sup>4</sup>				Collaborative Enrollment <sup>5</sup>		
	Number of Course Enrollments	Headcount of High School Students Enrolled in College Courses	High School Students with more than one College Course Enrollment	Beginning Freshmen <sup>6</sup>	Transfer <sup>7</sup>	Number of Developmental Enrollments	Headcount of Students Enrolled in Developmental Courses	Students with More than One Developmental Enrollment	Collaborative Development <sup>8</sup>	Collaborative Developmental Enrollments	Collaborative Degree Credit Enrollments	Total Collaborative Enrollments
BSC	714	564	138	878	272	875	505	249	3			
DCB	219	163	54	161	92	612	379	175	179	3	163	166
LRSC	1,047	751	261	200	140	261	192	66	5	179	75	254
NDSCS	1,165	684	338	770	234	964	524	254	16	5	364	369
WSC	280	233	40	255	77	457	265	138	0	16	44	60
<b>Subtotal</b>	<b>3,425</b>	<b>2,395</b>	<b>831</b>	<b>2,264</b>	<b>815</b>	<b>3,169</b>	<b>1,865</b>	<b>882</b>	<b>203</b>	<b>0</b>	<b>21</b>	<b>21</b>
DSU	283	196	63	190	181	208	128	68	0	<b>203</b>	<b>667</b>	<b>870</b>
MaSU	243	183	40	138	142	160	91	52	1	0	6	6
MiSU	244	190	54	357	351	127	127		0	1	46	46
VCSU	108	82	26	186	120	40	40		0	0	127	127
<b>Subtotal</b>	<b>878</b>	<b>651</b>	<b>183</b>	<b>871</b>	<b>794</b>	<b>535</b>	<b>386</b>	<b>120</b>	<b>1</b>	<b>0</b>	<b>135</b>	<b>135</b>
NDSU	5	5	0	2,503	690	713	626	87	0	<b>1</b>	<b>314</b>	<b>315</b>
UND	12	7	3	1,928	822	337	322	15	0	0	111	111
<b>Subtotal</b>	<b>17</b>	<b>12</b>	<b>3</b>	<b>4,431</b>	<b>1,512</b>	<b>1,050</b>	<b>948</b>	<b>102</b>	<b>0</b>	<b>0</b>	<b>183</b>	<b>183</b>
<b>NDUS Total</b>	<b>4,320</b>	<b>3,058</b>	<b>1,017</b>	<b>7,566</b>	<b>3,121</b>	<b>4,754</b>	<b>3,199</b>	<b>1,104</b>	<b>204</b>	<b>204</b>	<b>1,164</b>	<b>1,368</b>

**Data Definitions:**

<sup>1</sup>**Enrollments** - Total number of enrollments into courses. One student will account for multiple enrollments when he/she is enrolled in more than one course.

<sup>2</sup>**High School Students Enrolled in College Courses** – A high school student who enrolls in college courses. Includes both dual credit and early entry. Totals include only those students enrolled in college courses in the eleven NDUS institutions.

<sup>3</sup>**New Undergraduate Student Enrollments** – Includes both incoming freshmen and undergraduate transfer, degree seeking students for the reporting term.

<sup>4</sup>**Developmental** - Basic academic skills courses designed to prepare students to complete postsecondary academic degree-credit courses. Do not count as degree credit coursework.

<sup>5</sup>**Collaborative Enrollment** - A student who enrolls in a course at a NDUS institution other than his/her home institution.

<sup>6</sup>**Beginning Freshmen** - Full-time/Part-time student attending any institution for the first time as a freshman. Since part-time students are included, this result is not the same as the IPEDS first-time full-time count.

<sup>7</sup>**Transfer** - A student entering an institution for the first time but known to have previously attended a postsecondary institution at the same level. This student may transfer with or without credit.

<sup>8</sup>**Collaborative Development** - A student who enrolls in a course at a NDUS institution other than his/her home institution for the purpose of completing developmental courses only. These students are non-degree seeking students at the institution at which they are taking collaborative developmental courses. Students in this category are not included in the official headcount because of their non-degree status.

**Sources:**

Campus Solutions>Student Records>Enrollment Reports>Developmental Course Enrollments (NDU02SRY); Campus Solutions>Student Records>Enrollment Reports>High School Enrolled Students (NDUH2SRW); Campus Solutions>Student Records>Enrollment Reports>Compliance Report (NDUH2SRK)

As of 09.20.2016

Table 4  
**Full Time Equivalent Enrollments of Part Time and Full Time by Level of Student Based on Total Student Credit Hours<sup>1</sup>**  
 Fall 2016

Institution	Freshmen			Sophomore			Junior			Senior			Graduate			Professional <sup>5</sup>			Total		
	FTE of Part Time <sup>2</sup>	FTE <sup>3</sup>	SCH <sup>4</sup>	FTE of Part Time	FTE	SCH	FTE of Part Time	FTE	SCH	FTE of Part Time	FTE	SCH	FTE of Part Time	FTE	SCH	FTE of Part Time	FTE	SCH	FTE of Part Time	FTE	SCH
BSC	275	1,363	20,441	272	1,378	20,670	12	22	330	56	98	1,466							615	2,860	42,907
DCB	100	317	4,761	35	173	2,590													135	490	7,351
LRSC	373	666	9,987	85	306	4,584													459	971	14,571
NDSCS	304	1,397	20,958	118	901	13,508													423	2,298	34,466
WSC	93	445	6,671	39	311	4,668													132	756	11,339
<b>Subtotal</b>	<b>1,146</b>	<b>4,188</b>	<b>62,818</b>	<b>550</b>	<b>3,068</b>	<b>46,020</b>	<b>12</b>	<b>22</b>	<b>330</b>	<b>56</b>	<b>98</b>	<b>1,466</b>							<b>1,763</b>	<b>7,375</b>	<b>110,634</b>
DSU	66	292	4,381	18	235	3,522	24	202	3,037	68	384	5,754	1	1	15				177	1,114	16,709
MaSU	75	230	3,452	7	141	2,119	21	153	2,290	63	251	3,766	6	7	80				171	782	11,707
MiSU	211	608	9,126	45	501	7,508	43	502	7,526	124	798	11,972	68	183	2,198				491	2,592	38,330
VCSU	87	254	3,814	15	229	3,437	32	200	2,994	62	308	4,614	51	54	645				247	1,044	15,504
<b>Subtotal</b>	<b>440</b>	<b>1,385</b>	<b>20,773</b>	<b>84</b>	<b>1,106</b>	<b>16,586</b>	<b>120</b>	<b>1,056</b>	<b>15,847</b>	<b>317</b>	<b>1,740</b>	<b>26,106</b>	<b>126</b>	<b>245</b>	<b>2,938</b>				<b>1,087</b>	<b>5,532</b>	<b>82,250</b>
NDSU	90	2,636	39,536	73	2,783	41,752	107	2,473	37,096	256	3,455	51,826	494	1,096	13,152	5	340	5,569	1,025	12,783	188,931
UND	202	2,075	31,126	102	2,412	36,174	105	2,013	30,190	494	3,310	49,647	612	1,851	22,217	1	521	10,000	1,515	12,182	179,354
<b>Subtotal</b>	<b>291</b>	<b>4,711</b>	<b>70,662</b>	<b>175</b>	<b>5,195</b>	<b>77,926</b>	<b>213</b>	<b>4,486</b>	<b>67,286</b>	<b>750</b>	<b>6,765</b>	<b>101,473</b>	<b>1,105</b>	<b>2,947</b>	<b>35,369</b>	<b>6</b>	<b>861</b>	<b>15,569</b>	<b>2,540</b>	<b>24,965</b>	<b>368,285</b>
<b>NDUS Total</b>	<b>1,877</b>	<b>10,283</b>	<b>154,253</b>	<b>809</b>	<b>9,369</b>	<b>140,532</b>	<b>344</b>	<b>5,564</b>	<b>83,463</b>	<b>1,122</b>	<b>8,603</b>	<b>129,045</b>	<b>1,232</b>	<b>3,192</b>	<b>38,307</b>	<b>6</b>	<b>861</b>	<b>15,569</b>	<b>5,389</b>	<b>37,873</b>	<b>561,169</b>

**Methodology Note:** Numbers have been rounded to the nearest whole number

**Data Definitions:**

<sup>1</sup>**Full Time Equivalent Enrollments Based on Total Student Credit Hours** - Student credit hours accumulated at the undergraduate level divided by 15 plus student credit hours accumulated at the graduate level divided by 12. Every professional student is counted as one FTE.

<sup>2</sup>**FTE of Part Time** - Full time equivalent enrollment of students enrolled in less than twelve credit hours as of the 20th day of classes.

<sup>3</sup>**FTE** - Full Time Equivalent based on total student credit hours.

<sup>4</sup>**SCH** - Scheduled Credit Hours. The sum of all course credit hours in which students are enrolled as of the 20th day of classes.

<sup>5</sup>**Professional** - A student who has completed a baccalaureate degree and is enrolled in a post-baccalaureate program leading to a professional degree in law, medicine, or pharmacy.

**Sources:**

Campus Solutions>Student Records>Enrollment Report>Headcounts and FTE Enrollments (NDUH2SRA)

As of 09.20.2016

Table 5  
**Trending Headcount, Full Time Enrolled, and FTE of Degree Credit Students<sup>1</sup>**  
 Fall 2016

Institution	2012			2013			2014			2015			2016		
	HC <sup>2</sup>	FT <sup>3</sup>	FTE <sup>4</sup>	HC	FT	FTE	HC	FT	FTE	HC	FT	FTE	HC	FT	FTE
BSC	4,109	2,416	2,990	4,062	2,365	2,955	4,002	2,303	2,909	4,078	2,281	2,912	3,976	2,241	2,860
DCB	774	348	474	793	367	502	753	398	518	692	341	459	811	344	490
LRSC	1,974	524	973	1,898	486	943	1,988	530	978	1,918	535	981	1,947	501	971
NDSCS	3,066	1,807	2,354	3,168	1,712	2,295	3,033	1,706	2,272	3,123	1,694	2,305	3,003	1,753	2,298
WSC	808	418	537	909	430	593	883	421	579	1,038	603	738	1,039	620	756
<b>Sub Total</b>	<b>10,731</b>	<b>5,513</b>	<b>7,328</b>	<b>10,830</b>	<b>5,360</b>	<b>7,288</b>	<b>10,659</b>	<b>5,358</b>	<b>7,256</b>	<b>10,849</b>	<b>5,454</b>	<b>7,395</b>	<b>10,776</b>	<b>5,459</b>	<b>7,375</b>
DSU	1,837	1,218	1,454	1,449	1,018	1,201	1,479	980	1,176	1,317	896	1,070	1,386	912	1,114
MaSU	1,020	614	759	1,065	587	749	1,081	635	798	1,110	638	796	1,130	613	782
MiSU	3,560	2,279	2,731	3,533	2,273	2,710	3,410	2,191	2,600	3,348	2,128	2,570	3,412	2,132	2,592
VCSU	1,362	799	995	1,366	761	975	1,378	783	990	1,422	789	1,031	1,452	802	1,044
<b>Sub Total</b>	<b>7,779</b>	<b>4,910</b>	<b>5,939</b>	<b>7,413</b>	<b>4,639</b>	<b>5,635</b>	<b>7,348</b>	<b>4,589</b>	<b>5,564</b>	<b>7,197</b>	<b>4,451</b>	<b>5,467</b>	<b>7,380</b>	<b>4,459</b>	<b>5,532</b>
NDSU	14,443	11,733	12,707	14,629	11,798	12,797	14,747	11,917	12,934	14,516	11,684	12,834	14,432	11,680	12,783
UND	15,250	11,382	12,729	15,143	11,160	12,606	14,906	10,786	12,420	14,951	10,867	12,455	14,648	10,576	12,182
<b>Sub Total</b>	<b>29,693</b>	<b>23,115</b>	<b>25,436</b>	<b>29,772</b>	<b>22,958</b>	<b>25,403</b>	<b>29,653</b>	<b>22,703</b>	<b>25,354</b>	<b>29,467</b>	<b>22,551</b>	<b>25,289</b>	<b>29,080</b>	<b>22,256</b>	<b>24,965</b>
<b>NDUS Total</b>	<b>48,203</b>	<b>33,538</b>	<b>38,703</b>	<b>48,015</b>	<b>32,957</b>	<b>38,326</b>	<b>47,660</b>	<b>32,650</b>	<b>38,174</b>	<b>47,513</b>	<b>32,456</b>	<b>38,151</b>	<b>47,236</b>	<b>32,174</b>	<b>37,873</b>

**Data Definitions:**

<sup>1</sup>**Degree Credit** - All institutional activities that can be applied toward college degree or credit based developmental or remedial courses taken by a degree-seeking student as reported to IPEDS.

<sup>2</sup>**HC** - Headcount Enrollment

<sup>3</sup>**FT** - Full time student.

<sup>4</sup>**FTE** - Full Time Equivalent based on total student credit hours

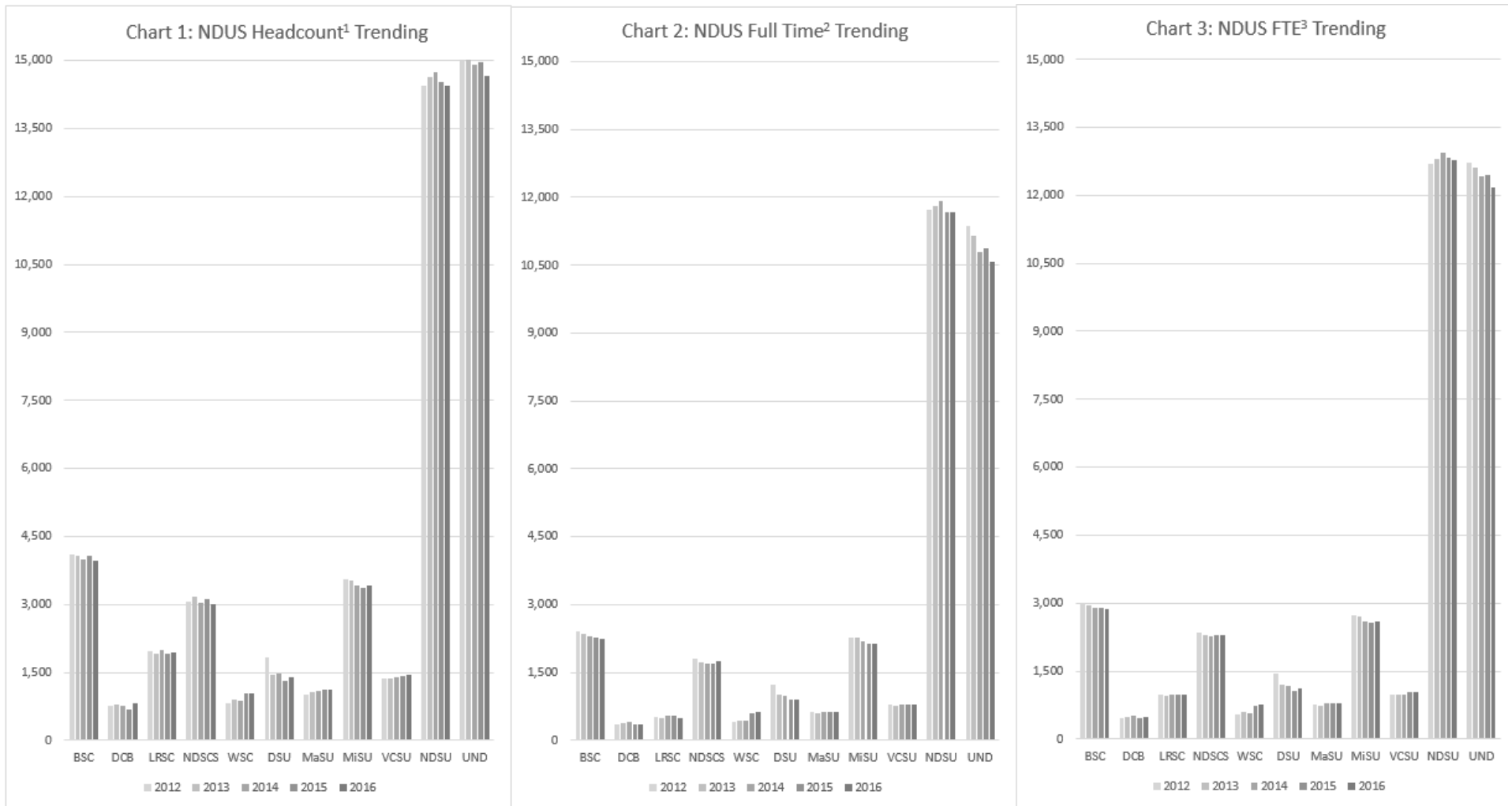
**Sources:**

Campus Solutions>Student Records>Enrollment Report>Headcounts and FTE Enrollments (NDUH2SRA)

NDUS Fall 2015 Enrollment Report: Table 5

As of 09.20.2016

Charts 1, 2, 3  
**Headcount, Full Time, and FTE Trending**  
 Fall 2011 to Fall 2016



**Data Definitions:**

<sup>1</sup>**Headcount Enrollment** - A student counted as one enrollment in degree credit courses at his/her home campus as of the 20th scheduled class day.

<sup>2</sup>**Full Time** - Undergraduate students enrolled in 12 or more credit hours or graduate and professional students enrolled in 9 or more credit hours (as of the 20th scheduled day of class).

<sup>3</sup>**FTE**- Full Time Equivalent based on total student credit hours

**Sources:** Trending data charts derived from Table 5.

As of 09.20.2016

Table 6  
**Degree Credit<sup>1</sup> Headcount Enrollment<sup>2</sup> by Instructional Mode**  
 Fall 2016

Institution	Distance Education (DE) <sup>3</sup>				Unduplicated Campus DE Total	Face-to-face Campus Total	Total Headcount
	Face to Face <sup>4</sup> Off Campus	Independent Study <sup>5</sup>	E-Learn <sup>6</sup>	Duplicated <sup>7</sup> Distance Ed Total			
BSC	472	4	1,970	2,446	2,407	2,274	3,976
DCB	171		409	580	580	405	811
LRSC	1,091		757	1,848	1,707	390	1,947
NDSCS	1,127		1,005	2,132	1,912	1,573	3,003
WSC	112		752	864	859	650	1,039
<b>Subtotal</b>	<b>2,973</b>	<b>4</b>	<b>4,893</b>	<b>7,870</b>	<b>7,465</b>	<b>5,292</b>	<b>10,776</b>
DSU	20	20	591	631	605	1,082	1,386
MaSU	78		615	693	669	570	1,130
MiSU	607	31	1,196	1,834	1,704	2,302	3,412
VCSU	238		855	1,093	1,041	818	1,452
<b>Subtotal</b>	<b>943</b>	<b>51</b>	<b>3,257</b>	<b>4,251</b>	<b>4,019</b>	<b>4,772</b>	<b>7,380</b>
NDSU	411		4,870	5,281	5,178	13,652	14,432
UND	488	6	4,897	5,391	5,312	11,302	14,648
<b>Subtotal</b>	<b>899</b>	<b>6</b>	<b>9,767</b>	<b>10,672</b>	<b>10,490</b>	<b>24,954</b>	<b>29,080</b>
<b>NDUS Total</b>	<b>4,815</b>	<b>61</b>	<b>17,917</b>	<b>22,793</b>	<b>21,974</b>	<b>35,018</b>	<b>47,236</b>
<b>Percentage</b>					<b>46.5%</b>	<b>74.1%</b>	<b>100.0%</b>

**Methodology Note:** Report NDUH2SRO is used in reporting as it includes ONLY degree credit coursework. Report NDUH2SRZ includes non-credit coursework, and thus is not used.

**Data Definitions:**

<sup>1</sup>**Degree Credit** - Instructional activities associated with the amount of instructor/student contact time that could be applied toward a college degree or developmental/remedial courses taken by a degree-seeking student as reported to IPEDS.

<sup>2</sup>**Headcount Enrollment** - A student counted as one enrollment in degree credit courses at his/her home campus as of the 20th scheduled class day.

<sup>3</sup>**Distance Education** - courses where a student is not located in a traditional face-to-face classroom on his/her home institution. Includes face-to-face off campus, correspondence, interactive video network, synchronous and asynchronous internet.

<sup>4</sup>**Face-to-face Off Campus** - A classroom environment where the instructor and students are physically located in the same place in an off campus location.

<sup>5</sup>**Independent Study** - A correspondence course in which all communications between instructor and student is accomplished through the mail, email or fax.

<sup>6</sup>**E-Learn** - Instruction in an electronic format via the internet. Includes synchronous and asynchronous internet, and interactive video network (IVN).

<sup>7</sup>**Duplicated** - An enrollment count in which an individual student may be counted more than once because they are enrolled in more than one medium or more than one campus.

**Sources:** Campus Solutions>Student Records>Enrollment Report>Degr Crdt H/C by Category (NDUH2SRO)

As of 09.20.2016

Table 7  
**Degree Credit<sup>1</sup> Headcount Enrollment<sup>2</sup> by E-Learning<sup>3</sup> Delivery Method**  
 Fall 2016

<b>Institution</b>	<b>Interactive Video (IVN)<sup>4</sup></b>	<b>Synchronous Internet<sup>5</sup></b>	<b>Asynchronous Internet<sup>6</sup></b>	<b>Combo<sup>7</sup></b>	<b>Duplicated Total</b>	<b>Unduplicated Total</b>
BSC	116	40	1,839		1,995	1,970
DCB	181		280		461	409
LRSC	84		694		778	757
NDSCS	93		729	260	1,082	1,005
WSC	100		503	264	867	752
<b>Subtotal</b>	<b>574</b>	<b>40</b>	<b>4,045</b>	<b>524</b>	<b>5,183</b>	<b>4,893</b>
DSU	72		567	19	658	591
MaSU	137		534		671	615
MiSU	74	15	1,160		1,249	1,196
VCSU	32		845		877	855
<b>Subtotal</b>	<b>315</b>	<b>15</b>	<b>3,106</b>	<b>19</b>	<b>3,455</b>	<b>3,257</b>
NDSU	66	62	3,492	1,496	5,116	4,870
UND	40	782	4,325	2	5,149	4,897
<b>Subtotal</b>	<b>106</b>	<b>844</b>	<b>7,817</b>	<b>1,498</b>	<b>10,265</b>	<b>9,767</b>
<b>NDUS Total</b>	<b>995</b>	<b>899</b>	<b>14,968</b>	<b>2,041</b>	<b>18,903</b>	<b>17,917</b>

**Data Definitions:**

<sup>1</sup>**Degree Credit** - Instructional activities associated with the amount of instructor/student contact time that could be applied toward a college degree or developmental/remedial courses taken by a degree-seeking student as reported to IPEDS.

<sup>2</sup>**Headcount Enrollment** - A student counted as one enrollment in degree credit courses at his/her home campus as of the 20th scheduled class day.

<sup>3</sup>**E-Learning** - Instruction in an electronic format via the internet. Includes synchronous and asynchronous internet, and interactive video network (IVN).

<sup>4</sup>**Interactive Video** - Two way video system in which the participants can synchronously interact.

<sup>5</sup>**Synchronous Internet** - Internet based class where instructor and students are online at the same time in order to interact.

<sup>6</sup>**Asynchronous Internet** - Internet based class where instructor and students are not online at the same time.

<sup>7</sup>**Combo** - a course that uses a combination of both traditional face-to-face and e-learning.

**Sources:**

Campus Solutions> Student Records> Enrollment Reports> E-Lrn Degr H/C by dlrvy mthd (NDU02SRQ)

As of 09.20.2016

Table 8  
Undergraduate Headcount Enrollment by State  
Fall 2016

State	Two Year Colleges					Regional Universities				Research Universities		NDUS Headcount Enrollment	NDUS Unduplicated Headcount
	BSC	DCB	LRSC	NDSCS	WSC	DSU	MASU	MISU	VCSU	NDSU	UND		
Alabama	5	1	1	4			2	3	1		27	44	43
Alaska	4	3	2			4	5	4	10	2	22	56	55
Arizona	15	4	7	1	9	9	7	23	8	14	59	156	153
Arkansas	8	1		1		1	1	1		1	9	23	22
California	37	8	2	7	16	48	63	108	34	55	258	636	625
Colorado	20	7	3	1	6	4	3	10	13	17	121	205	200
Connecticut	4		2	2		2		1	1	1	17	30	29
Delaware	4		1					1			4	10	9
District of Columbia		1						1		1	3	6	6
Florida	32	12	4	21	3	5	25	43	5	9	54	213	210
Georgia	21	6	1	4	1	2	10	5	3	4	33	90	90
Hawaii		2	4	3		1	4	4	2	2	20	42	41
Idaho	8		1		4	5	6	6	3	1	16	50	49
Illinois	20	3	5	8	2	1	11	18	6	36	139	249	241
Indiana	10	2	1	1		4	1	5		4	28	56	55
Iowa	5			1	1		1	1	3	20	30	62	61
Kansas	1						3	3	1	13	29	50	50
Kentucky	8	3		1			2		1	1	11	27	27
Louisiana	12	2	1	2				2		1	7	27	27
Maine			1			1		4			7	13	13
Maryland	7	1		7	2		1	8	2	5	37	70	69
Massachusetts	8	1			1		1	1	2	3	26	43	43
Michigan	23	13	8	6	3	4	7	9	4	8	70	155	148
Minnesota	61	8	175	706	6	9	161	75	165	5,788	4,072	11,226	10,900
Mississippi	4					1	2	2			6	15	15
Missouri	12	2	1		1	1	5	4	3	14	54	97	97
Montana	33	10	8	42	47	122	5	42	7	48	79	443	429
Nebraska	16	5		1			2	7	1	17	32	81	79
Nevada	10	2	3	1	12	9	6	5	1	6	23	78	74
New Hampshire	5		1				1	3		1	12	23	22
New Jersey	3	1	1	1	1		1	3	2	2	48	63	63
New Mexico	6	1	2	1		1	2	4	1	3	22	43	41
New York	41	1	2	4	1	2		6	4	5	57	123	121
North Carolina	13	1		1		1	3	5		2	44	70	68
<b>NORTH DAKOTA</b>	<b>3,275</b>	<b>634</b>	<b>1,638</b>	<b>2,056</b>	<b>864</b>	<b>1,021</b>	<b>672</b>	<b>2,328</b>	<b>855</b>	<b>5,328</b>	<b>4,509</b>	<b>23,180</b>	<b>22,315</b>
Ohio	12	7	1	4			1	10	3	6	22	66	66
Oklahoma	24				2	2	4	2	1	1	17	53	50
Oregon	3	5	1		2	1	5	18	3	5	28	71	70
Pennsylvania	18	1	1	2	1	1	3	5	5	5	50	92	90
Rhode Island		1		6					1		8	16	16
South Carolina	8			2		1	2	1	1	1	22	38	38
South Dakota	45	1	2	67	3	25	1	10	14	181	118	467	455
Tennessee	5	2	1	7				3	2	3	17	40	39
Texas	34	13	7	4	5	9	19	25	9	20	119	264	257
Utah	20	1	1		9	5	4	6	1	1	28	76	75
Vermont	1								1		5	7	7
Virginia	16	1	1	6	3	3	3	7	2	7	39	88	86
Washington	10	13	4	3		5	4	30	5	11	144	229	223
West Virginia	2		1					1			4	8	8
Wisconsin	17	1	9	8	2	3	11	10	10	144	235	450	439
Wyoming	17	5			1	14	8	1	75	8	53	182	177
APO <sup>1</sup> AE/AP	8		1	1	1		1	4	1		23	40	38
Canada		16	18	2	21	13	13	156	15	13	74	341	334
Guam											1	1	1
Puerto Rico								1		1		2	2
Virgin Islands	1			1			1	1		1	3	8	8
Other International	4	9	24	7	9	41	15	100	8	190	260	667	647
<b>Campus Totals</b>	<b>3,976</b>	<b>811</b>	<b>1,947</b>	<b>3,003</b>	<b>1,039</b>	<b>1,381</b>	<b>1,108</b>	<b>3,136</b>	<b>1,295</b>	<b>12,010</b>	<b>11,255</b>	<b>40,961</b>	<b>39,616</b>

**Methodology Note:** Home state reported by student. As of 09.20.2016

**Data Definitions:**

<sup>1</sup>APO AE/AP – A military post office address.

**Sources:** Campus Solutions>Student Records>Enrollment Report> Enroll total by State/County (NDUH2SRG); Unduplicated numbers determined using system combined csv "F" file: Campus Solutions> Student Records> Student Enroll by State/County (NDUS2SRF)



Table 9  
**Graduate<sup>1</sup> and Professional<sup>2</sup> Headcount Enrollment by State**  
 Fall 2016

State	Regional Universities				Research Universities		NDUS Totals	NDUS Unduplicated Total
	DSU	MASU	MISU	VCSU	NDSU	UND		
Alabama					2	14	16	16
Alaska					2	14	16	16
Arizona			3		4	24	31	31
Arkansas					4	3	7	7
California			7		17	74	98	98
Colorado			1	1	15	40	57	57
Connecticut				1	2	4	7	7
Delaware			1		1	2	4	4
District of Columbia					1	3	4	4
Florida			3		12	35	50	50
Georgia			2	1	4	22	29	29
Hawaii					2	5	7	7
Idaho					2	16	18	18
Illinois			2		14	35	51	51
Indiana			2		9	12	23	23
Iowa			2	1	13	16	32	32
Kansas			2		15	12	29	29
Kentucky					1	6	7	7
Louisiana			1		1	9	11	11
Maine				1	2	5	8	8
Maryland			1		3	22	26	26
Massachusetts			1		7	11	19	19
Michigan			7	1	12	29	49	49
Minnesota		2	6	10	505	589	1,112	1,111
Mississippi					1	1	2	2
Missouri			2	1	16	18	37	37
Montana			5	1	10	50	66	66
Nebraska					4	12	16	16
Nevada					1	10	11	11
New Hampshire			1		2	5	8	8
New Jersey			1	3	2	17	23	23
New Mexico			1		1	9	11	11
New York			2	1	1	34	38	38
North Carolina				1	11	24	36	36
<b>NORTH DAKOTA</b>	<b>5</b>	<b>20</b>	<b>139</b>	<b>114</b>	<b>1,161</b>	<b>1,539</b>	<b>2,978</b>	<b>2,974</b>
Ohio			3		9	28	40	40
Oklahoma					10	6	16	16
Oregon			1		6	12	19	19
Pennsylvania			4	2	4	38	48	48
Rhode Island			1			2	3	3
South Carolina			1	3	2	7	13	13
South Dakota			1	3	37	68	109	109
Tennessee					3	7	10	10
Texas			3		18	50	71	71
Utah			1	1	5	12	19	19
Vermont				1		1	2	2
Virginia			2	2	8	32	44	44
Washington			9		8	51	68	68
West Virginia						3	3	3
Wisconsin			3	3	30	51	87	87
Wyoming				4	3	43	50	50
APO <sup>3</sup> AE/AP				1	1	10	12	12
Canada			47		4	87	138	138
Guam						1	1	1
Puerto Rico					2		2	2
Virgin Islands					1	1	2	2
Other International			8		410	162	580	580
Not Indicated					1		1	1
<b>Campus Totals</b>	<b>5</b>	<b>22</b>	<b>276</b>	<b>157</b>	<b>2,422</b>	<b>3,393</b>	<b>6,274</b>	<b>6,270</b>

**Data Definitions:**

<sup>1</sup>**Graduate** - A student who holds a bachelor's degree or first professional degree, or equivalent, and is enrolled in a graduate degree program.

<sup>2</sup>**Professional** - A student who has completed a baccalaureate degree and is enrolled in a post-baccalaureate program leading to a professional degree in law, medicine, or pharmacy.

<sup>3</sup>**APO AE/AP** - A military post office address

**Sources:**

Campus Solutions>Student Records>Enrollment Report> Enroll total by State/County (NDUH2SRG); Unduplicated numbers determined using system combined csv "F" file: Campus Solutions> Student Records> Student Enroll by State/County (NDUS2SRF)

As of 09.20.2016

Table 10  
**Headcount Enrollments<sup>1</sup> for North Dakota Students by County of Residence**  
 Fall 2016

County	Two Year Colleges					Regional Universities				Research Universities		Total	NDUS Unduplicated Total
	BSC	DCB	LRSC	NDSCS	WSC	DSU	MASU	MISU	VCSU	NDSU	UND		
Adams	12		1		2	18				8	4	45	45
Barnes	7	22	7	30	1		6		252	69	31	425	406
Benson	5	9	59	11	1	1	10	7	11	25	23	162	160
Billings	2			1		3				2		8	8
Bottineau	13	107	4	8		1	4	43	2	32	28	242	239
Bowman	18	1	2	13	5	40	1	3	2	27	18	130	125
Burke	2	7	1		24	1	1	14	1	5	7	63	60
Burleigh	1,579	8	46	44	8	127	14	119	51	586	483	3,065	2,932
Cass	35	15	42	939	1	10	85	43	178	3,705	695	5,748	5,607
Cavalier	7		22	5			10	2	6	36	35	123	117
Dickey	4			47			1	1	27	72	13	165	163
Divide	4	1		3	26	2	1	4	1	8	4	54	53
Dunn	24	2	3	6	11	35	4	3	2	14	10	114	106
Eddy	5	1	41	3			4	1	3	28	4	90	88
Emmons	58	1	10	24		4		4	7	44	11	163	149
Foster	16	5	58	5		1	4	4	8	44	24	169	161
Golden Valley	9		2	5		18			1	9	9	53	50
Grand Forks	10	8	507	35	2	2	121	16	27	145	3,110	3,983	3,846
Grant	26	1	3	3		8	2	2	3	11	2	61	58
Griggs	7	2	18	13		1	6		7	15	14	83	77
Hettinger	39	1		1		36		1	1	10	5	94	89
Kidder	12		23	3				2	4	15	4	63	63
Lamoure	8	12	6	31			2		26	31	10	126	124
Logan	9		7			4	1	1	5	17	3	47	44
McHenry	12	32	36	8			2	56	4	29	23	202	194
McIntosh	41	1	4	5		1		2	2	32	12	100	95
McKenzie	33	12	4	3	43	5	2	13	6	17	28	166	156
McLean	139	15	8	16	4	6	5	33	5	36	17	284	274
Mercer	120		25	13	23	9	2	12	11	53	39	307	294
Morton	587	1	12	10	4	70	9	51	26	175	96	1,041	991
Mountrail	15	8	5	6	43	8	1	43	3	29	31	192	186
Nelson			41	8			10		8	12	26	105	99
Oliver	16					1	1	1		4	1	24	23
Pembina		1	30	13			22	2	9	48	68	193	181
Pierce	18	53	24	9			1	11	3	19	28	166	154
Ramsey	4	7	274	16	2		40	19	9	59	107	537	505
Ransom	6	4	2	63			15	1	31	47	18	187	175
Renville	6	31	2	4	3			36	1	14	13	110	106
Richland	5	1	6	327		2	18	3	36	159	94	651	643
Rolette	17	71	25	2	1	1	3	22	17	42	77	278	272
Sargent	1	3	3	81		1	5	1	17	51	20	183	179
Sheridan	18	4	4	4				2	3	3	2	40	37
Sioux	10	1				3		2		3	3	22	21
Slope	2			1		4				3		10	9
Stark	98	2	8	20	4	583	4	13	12	120	122	986	962
Steele	2		4	4			20		10	15	10	65	65
Stutsman	54	21	39	96		2	7	8	66	106	79	478	450
Towner	10	3	26	1			2	4	3	14	11	74	72
Traill	3	1	20	24		2	179	2	9	87	69	396	385
Walsh	2		91	7			37	2	11	67	120	337	330
Ward	101	138	34	59	42	6	4	1,789	19	181	260	2,633	2,574
Wells	28	2	39	7		2	2	6	5	31	19	141	135
Williams	16	18	9	19	614	8	24	63	18	74	105	968	940
Not Indicated		1	1							1	2	5	5
<b>Grand Total</b>	<b>3,275</b>	<b>634</b>	<b>1,638</b>	<b>2,056</b>	<b>864</b>	<b>1,026</b>	<b>692</b>	<b>2,467</b>	<b>969</b>	<b>6,489</b>	<b>6,047</b>	<b>26,157</b>	<b>25,282</b>

**Methodology Note:** County of Residence reported by student.

**Data Definitions:**

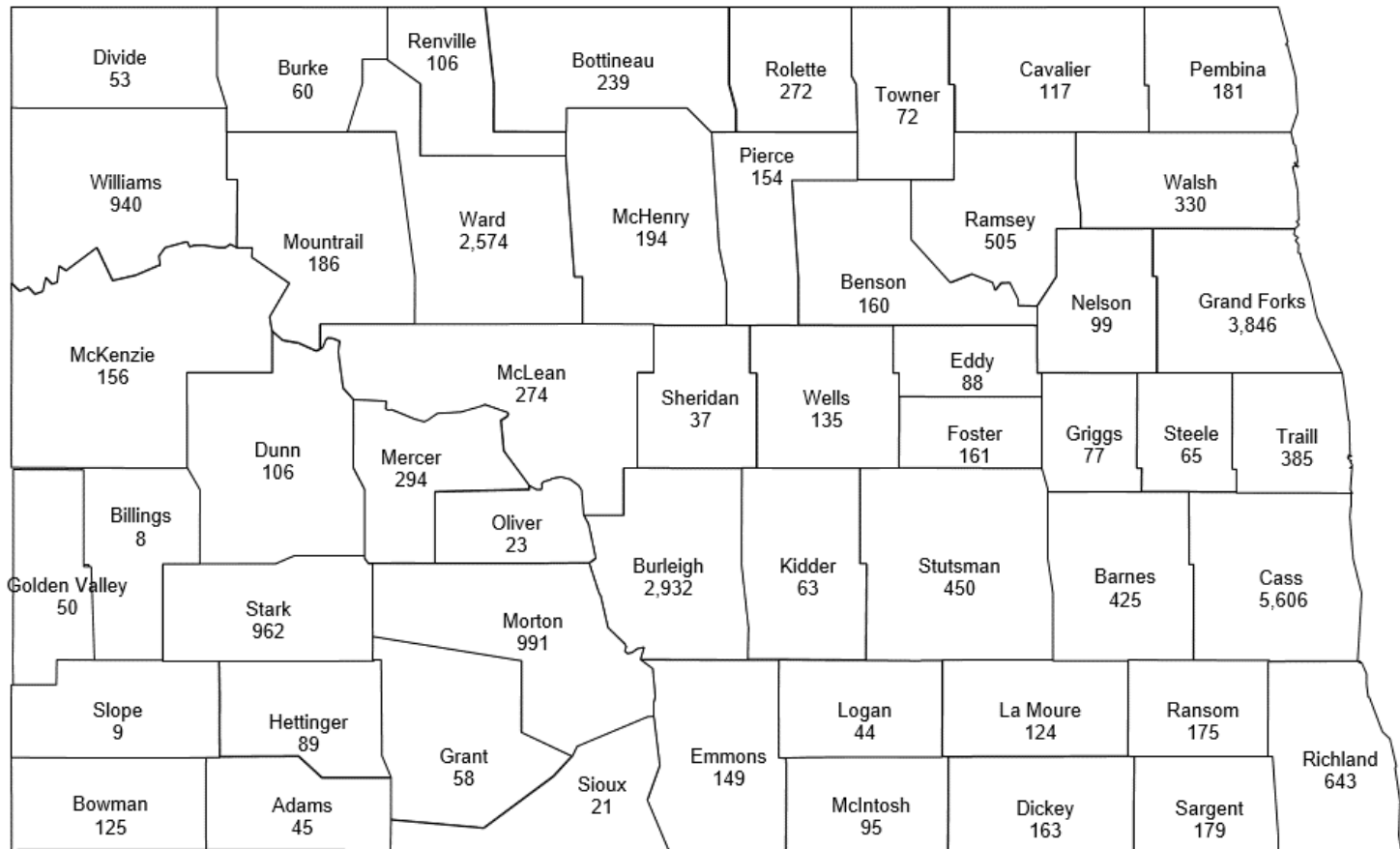
<sup>1</sup>**Headcount Enrollment** - A student counted as one enrollment in degree credit courses as of the 20th scheduled day of class.

**Sources:**

Campus Solutions>Student Records>Enrollment Report> Enroll total by State/County (NDUH2SRG); Unduplicated numbers determined using system combined csv "F" file; Campus Solutions> Student Records> Student Enroll by State/County (NDUS2SRF).

As of 09.20.2016

Figure 1  
**Unduplicated Headcount Enrollments<sup>1</sup> for North Dakota Students by County of Residence**  
 Fall 2016



Total unduplicated headcount = 25,281 Note: County of Residence reported by student.

<sup>1</sup>Unduplicated headcount enrollment - A student counted as one enrollment in degree credit courses as of the 20th scheduled class day.

Source: Unduplicated numbers determined using system combined csv "F" file: Campus Solutions> Student Records> Student Enroll by State/County (NDUS2SRF). As of 09.20.2016

**Table 11**  
**All Enrollments<sup>1</sup> for North Dakota Students by County of Residence**  
**Fall 2012 through Fall 2016**

ND County	2012	2013	2014	2015	2016	ND County
Adams	66	47	57	56	45	Adams
Barnes	382	416	409	424	425	Barnes
Benson	166	160	176	158	162	Benson
Billings	8	9	9	4	8	Billings
Bottineau	323	306	260	233	242	Bottineau
Bowman	103	118	117	113	130	Bowman
Burke	71	67	58	59	63	Burke
Burleigh	3,028	2,882	2,900	2,967	3,065	Burleigh
Cass	5,753	5,790	5,716	5,829	5,747	Cass
Cavalier	154	160	133	129	123	Cavalier
Dickey	175	164	148	159	165	Dickey
Divide	56	53	57	55	54	Divide
Dunn	116	91	91	99	114	Dunn
Eddy	89	89	82	96	90	Eddy
Emmons	192	170	188	164	163	Emmons
Foster	149	147	155	161	169	Foster
Golden Valley	57	58	56	42	53	Golden Valley
Grand Forks	4,367	4,419	4,118	4,230	3,983	Grand Forks
Grant	55	59	70	59	61	Grant
Griggs	89	89	75	80	83	Griggs
Hettinger	103	86	90	94	94	Hettinger
Kidder	79	82	81	69	63	Kidder
LaMoure	117	124	110	107	126	LaMoure
Logan	70	65	91	67	47	Logan
McHenry	258	266	237	208	202	McHenry
McIntosh	99	87	107	101	100	McIntosh
McKenzie	108	116	132	132	166	McKenzie
McLean	296	262	270	267	284	McLean
Mercer	329	317	326	305	307	Mercer
Morton	1,045	993	991	1,019	1,041	Morton
Mountrail	171	188	165	163	192	Mountrail
Nelson	121	96	97	97	105	Nelson
Oliver	47	41	33	38	24	Oliver
Pembina	202	206	216	206	193	Pembina
Pierce	194	171	159	142	166	Pierce
Ramsey	605	596	566	536	537	Ramsey
Ransom	163	160	168	182	187	Ransom
Renville	113	95	103	94	110	Renville
Richland	746	717	738	707	651	Richland
Rolette	266	242	235	203	278	Rolette
Sargent	185	205	194	174	183	Sargent
Sheridan	42	39	34	31	40	Sheridan
Sioux	25	26	24	26	22	Sioux
Slope	7	8	7	10	10	Slope
Stark	975	885	995	986	986	Stark
Steele	58	62	67	58	65	Steele
Stutsman	544	517	495	494	478	Stutsman
Towner	86	87	72	72	74	Towner
Traill	386	363	359	372	396	Traill
Walsh	414	401	388	379	337	Walsh
Ward	2,656	2,647	2,574	2,482	2,633	Ward
Wells	156	151	147	121	141	Wells
Williams	760	768	799	993	968	Williams
Unspecified	33	47	5		5	Unspecified
<b>Total</b>	<b>26,825</b>	<b>26,410</b>	<b>25,950</b>	<b>26,052</b>	<b>26,156</b>	<b>Total</b>
<b>Percent annual change</b>	<b>-11.61%</b>	<b>-1.55%</b>	<b>-1.74%</b>	<b>0.39%</b>	<b>0.79%</b>	

**Methodology Note:** County of Residence reported by student

**Data Definitions:**

<sup>1</sup>**Enrollments** – A student counted as one enrollment in degree credit courses at each campus attending.

**Sources:**

Campus Solutions>Student Records>Enrollment Report> Enroll total by State/County (NDUH2SRG)

NDUS 2015 Fall Enrollment Report>Table 12

As of 09.20.2016

Table 12  
**Headcount Enrollments and Headcount by Tuition Residency Status**  
 Fall 2016

<b>Residency Status</b>	<b>BSC</b>	<b>DCB</b>	<b>LRSC<sup>1</sup></b>	<b>NDSCS<sup>2</sup></b>	<b>WSC<sup>1</sup></b>	<b>DSU</b>	<b>MaSU</b>	<b>MiSU<sup>3</sup></b>	<b>VCSU</b>	<b>NDSU</b>	<b>UND</b>	<b>Duplicated Total</b>	<b>Unduplicated Total</b>	<b>Percent of Total</b>
<b>Resident</b>														
North Dakota	3,170	591	1,481	2,022	794	940	686	1,869	947	6,093	5,765	24,358	23,575	51.4%
North Dakota Military	7	3	86	16	1	4	7	348	6	255	824	1,557	1,546	3.4%
Alumni Dependent				1						11	21	33	33	0.1%
<b>Resident Sub-Total</b>	<b>3,177</b>	<b>594</b>	<b>1,567</b>	<b>2,039</b>	<b>795</b>	<b>944</b>	<b>693</b>	<b>2,217</b>	<b>953</b>	<b>6,359</b>	<b>6,610</b>	<b>25,948</b>	25,139	54.9%
<b>Non Resident</b>														
Minnesota Reciprocity	10	3	48	525		6	92	5	138	5,758	4,160	10,745	10,616	23.1%
Minnesota Professional										147	34	181	181	0.4%
Contiguous	78	13	19	112	71	177	14	239	34	247	363	1,367	1,349	2.9%
Midwest Higher Ed Compact <sup>4</sup>	184	32	174	151	23	17	105	168	69	716	796	2,435	2,400	5.2%
Western Exchange <sup>5</sup>	174	62	44	17	81	138	116	306	168	128	641	1,875	1,836	4.0%
Non Resident	353	107	95	159	69	104	110	477	90	1,077	2,044	4,685	4,649	10.1%
<b>Non Resident Total</b>	<b>799</b>	<b>217</b>	<b>380</b>	<b>964</b>	<b>244</b>	<b>442</b>	<b>437</b>	<b>1,195</b>	<b>499</b>	<b>8,073</b>	<b>8,038</b>	<b>21,288</b>	20,852	44.1%
<b>Totals</b>	<b>3,976</b>	<b>811</b>	<b>1,947</b>	<b>3,003</b>	<b>1,039</b>	<b>1,386</b>	<b>1,130</b>	<b>3,412</b>	<b>1,452</b>	<b>14,432</b>	<b>14,648</b>	<b>47,236</b>	45,879	100.0%

**Methodology Note:** Tuition Residency Status in this table reflects student status in Campus Solutions. Students indicated as nonresident students at LRSC, MiSU, and NDSCS may pay North Dakota resident rates based on institutional policy.

**Data Definitions:**

<sup>1</sup>**LRSC & WSC** – Non-foreign, nonresident students pay the North Dakota in-state tuition rate.

<sup>2</sup>**NDSCS** – Nonresident students who live in campus housing pay the North Dakota in-state tuition rate.

<sup>3</sup>**MiSU:** All Minot State University students pay the North Dakota in-state tuition rate when enrolling in on-campus courses.

<sup>4</sup>**Midwest Higher Ed (MHEC)** - A non-profit regional organization, established by compact statute, to assist Midwestern states in advancing higher education through interstate cooperation and resource sharing. Members are: Illinois, Indiana, Iowa, Kansas, Michigan, Minnesota, Missouri, Nebraska, North Dakota, Ohio, South Dakota, and Wisconsin.

<sup>5</sup>**Western Exchange (WICHE)** – A regional organization created by the Western Regional Education Compact and adopted in the 1950s by western states. WICHE was created to facilitate resources sharing among the higher education systems of the west. Members are: Alaska, Arizona, California, Colorado, Hawaii, Idaho, Montana, Nevada, New Mexico, North Dakota, Oregon, South Dakota, Utah, Washington, and Wyoming.

**Sources:**

Campus Solutions>Student Records>Enrollment Reports>Student Data Statistics (NDU02SRD)

As of 09.20.2016

Table 13  
**Headcount Enrollment<sup>1</sup> by Age**  
 Fall 2016

Age <sup>2</sup>	BSC	DCB	LRSC	NDSCS	WSC	DSU	MaSU	MiSU	VCSU	NDSU	UND	Age Group Total	Unduplicated Age Group Total	Percent of Total
Under 18	496	144	684	622	232	171	159	176	78	29	57	2,848	2,755	6.0%
18-19	1,283	208	427	1,161	348	281	245	642	323	4,469	3,312	12,699	12,393	27.0%
20-21	633	112	268	543	120	329	214	802	398	4,479	3,646	11,544	11,112	24.2%
22-24	333	89	184	232	104	272	204	785	205	2,810	3,072	8,290	8,062	17.6%
25-29	377	83	168	137	104	147	99	462	132	1,316	1,993	5,018	4,889	10.7%
30-34	305	47	79	80	42	87	71	220	96	633	1,049	2,709	2,634	5.7%
35-39	210	29	46	57	39	46	69	127	77	294	620	1,614	1,570	3.4%
40-49	215	51	55	73	33	35	43	141	90	288	621	1,645	1,610	3.5%
50-64	117	43	33	81	12	13	26	57	50	109	272	813	798	1.7%
> 65	7	5	3	17	5	5			3	5	6	56	56	0.1%
<b>Campus Total</b>	<b>3,976</b>	<b>811</b>	<b>1,947</b>	<b>3,003</b>	<b>1,039</b>	<b>1,386</b>	<b>1,130</b>	<b>3,412</b>	<b>1,452</b>	<b>14,432</b>	<b>14,648</b>	<b>47,236</b>	<b>45,879</b>	<b>100.0%</b>

**Data Definitions:**

<sup>1</sup>**Headcount Enrollment** - A student counted as one enrollment in degree credit courses at his/her home campus as of the 20th scheduled day of class.

<sup>2</sup>**Age** - Students' age is as of the 20th day of classes during the specified term. NDUS reporting truncates student age to whole year classification.

**Sources:**

Campus Solutions > Student Records > Enrollment Reports > Enroll Sum of Students by Age (NDUH2SRN)

As of 09.20.2016

<b>Descriptive Statistics</b> (years)	
Mean	23.9
Median	21.3
Mode	19
Minimum	14
Maximum	75
Range	61

Table 14  
**Headcount Enrollment<sup>1</sup> by Race<sup>2</sup>**  
 Fall 2016

NDUS Institution Classification	White <sup>3</sup>	Non Resident Alien <sup>4</sup>	Not Specified <sup>5</sup>	Hispanic or Latino <sup>6</sup>	Black or African American <sup>7</sup>	Two or more races <sup>8</sup>	American Indian or Alaska Native <sup>9</sup>	Asian <sup>10</sup>	Native Hawaiian or Pacific Islander <sup>11</sup>	Total
Two Year Colleges	8,814	211	253	355	496	350	211	72	14	10,776
Regional Universities	5,416	519	130	453	382	254	112	88	26	7,380
Research Universities	23,371	1,865	626	774	787	803	338	488	28	29,080
<b>Total</b>	<b>37,601</b>	<b>2,595</b>	<b>1,009</b>	<b>1,582</b>	<b>1,665</b>	<b>1,407</b>	<b>661</b>	<b>648</b>	<b>68</b>	<b>47,236</b>
<b>Unduplicated Total</b>	<b>36,501</b>	<b>2,557</b>	<b>988</b>	<b>1,546</b>	<b>1,591</b>	<b>1,352</b>	<b>641</b>	<b>635</b>	<b>68</b>	<b>45,879</b>
Percent of Total	<b>79.6%</b>	<b>5.6%</b>	<b>2.2%</b>	<b>3.4%</b>	<b>3.5%</b>	<b>2.9%</b>	<b>1.4%</b>	<b>1.4%</b>	<b>0.1%</b>	<b>100.0%</b>

**Methodology Note:** Race reported by student.

**Data Definitions:**

<sup>1</sup>**Headcount Enrollment** - A student counted as one enrollment in degree credit courses at his/her home campus as of the 20th scheduled day of class. Subtotals and totals may reflect duplication due to collaborative students.

<sup>2</sup>**Race** - Group or groups with which a person identifies or having origins as identified as valid values for IPEDS reporting.

<sup>3</sup>**White** - A person having origins in any of the original peoples of Europe, the Middle East, or North Africa.

<sup>4</sup>**Non Resident Alien** - A citizen or national of the U.S. and who is in this country on a visa or temporary basis and does not have the right to remain indefinitely.

<sup>5</sup>**Not Specified** - Student did not identify with a selected race.

<sup>6</sup>**Hispanic or Latino** - Cuban, Mexican, Puerto Rican, South or Central American, or other Spanish culture or origin, regardless of race.

<sup>7</sup>**Black or African American** - A person having origins in any of the black racial groups of Africa.

<sup>8</sup>**Two or more races** - A person having more than one origin.

<sup>9</sup>**American Indian or Alaska Native** - Original peoples of North and South America (including Central America) who maintains cultural identification through tribal affiliation or community attachment.

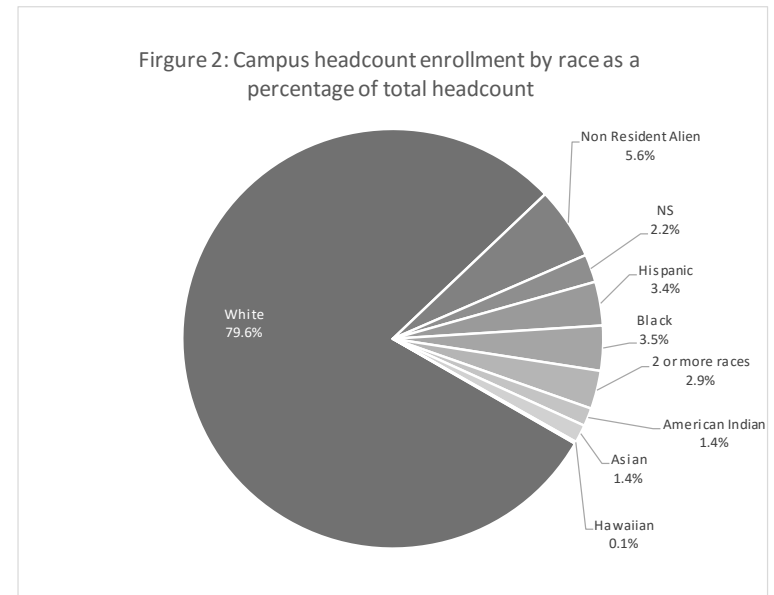
<sup>10</sup>**Asian** - Having origin in the Far East, Southeast Asia, or the Indian Subcontinent, including, for example, Cambodia, China, India, Japan, Korea, Malaysia, Pakistan, the Philippine Islands, Thailand, and Vietnam.

<sup>11</sup>**Native Hawaiian or Pacific Islander** - A person having origins in any of the original peoples of Hawaii, Guam, Samoa, or other Pacific Islands.

**Sources:**

Campus Solutions>Student Records>Enrollment Reports>Student Data Statistics (NDU02SRD)

As of 09.20.2016



## Glossary

**American Indian or Alaska Native** - Original peoples of North and South America (including Central America) who maintains cultural identification through tribal affiliation or community attachment.

**Age** – Student age as of the 20<sup>th</sup> day of classes during specified term. NDUS reporting truncates student age to whole year classification.

**APO AE/AP** – A military post office address.

**Asian** - Having origin in the Far East, Southeast Asia, or the Indian Subcontinent, including, for example, Cambodia, China, India, Japan, Korea, Malaysia, Pakistan, the Philippine Islands, Thailand, and Vietnam.

**Asynchronous Internet** - Internet based class where instructor and students are not online at the same time.

**Beginning Freshmen** - Full-time/Part-time student attending any institution for the first time as a freshman. Since part-time students are included, this result is not the same as the IPEDS first-time full-time count.

**Black or African American** - A person having origins in any of the black racial groups of Africa.

**Collaborative Development** - A student who enrolls in a course at a NDUS institution other than his/her home institution for the purpose of completing developmental courses only. These students are non-degree seeking students at the institution at which they are taking collaborative developmental courses. Students in this category are not included in the official headcount because of their non-degree status.

**Collaborative Enrollment** - A student who enrolls in a course at a NDUS institution other than his/her home institution.

**Combo** - a course that uses a combination of both traditional face-to-face and e-learning.

**Degree Credit** - Instructional activities associated with the amount of instructor/student contact time that could be applied toward a college degree or developmental/remedial courses taken by a degree-seeking student as reported to IPEDS.

**Developmental** - Basic academic skills courses designed to prepare students to complete postsecondary academic degree-credit courses. Does not count as degree credit coursework.

**Distance Education** - courses where a student is not located in a traditional face-to-face classroom on his/her home institution. Includes face-to-face off campus, correspondence, interactive video network, synchronous and asynchronous internet.

**Duplicated** - An enrollment count in which an individual student may be counted more than once because they are enrolled in more than one medium (face-to-face, e-learn, etc) or more than one campus.

**Enrollments** – Total number of enrollments into courses. One student will account for multiple enrollments when he/she is enrolled in more than one course.

**E-Learn** - Instruction in an electronic format via the internet. Includes synchronous and asynchronous internet, and interactive video network (IVN).

**Face-to-face Off Campus** - A classroom environment where the instructor and students are physically located in the same place in an off campus location

**FT** – Full time student.



**FTE** - Full Time Equivalent based on total student credit hours.

**FTE of Part Time** - Full time equivalent enrollment of students enrolled in less than twelve credit hours as of the 20th day of classes.

**Full Time** - Undergraduate students enrolled in 12 or more credit hours or graduate and professional students enrolled in 9 or more credit hours (as of the 20th scheduled day of class).

**Full Time Equivalent Enrollments Based on Total Student Credit Hours** - Student credit hours accumulated at the undergraduate level divided by 15 plus student credit hours accumulated at the graduate level divided by 12. Every professional student is counted as one FTE.

**Graduate** - A student who holds a bachelor's degree or first professional degree, or equivalent, and is enrolled in a graduate degree program.

**Headcount Enrollment** - A student counted as one enrollment in degree credit courses as of the 20th scheduled day of class.

**HC** – Headcount enrollment.

**High School Students Enrolled in College Courses** - A high school student who enrolls in college courses. Includes both dual credit and early entry. Total include only those students enrolled in NDUS institutions.

**Hispanic or Latino** - Cuban, Mexican, Puerto Rican, South or Central American, or other Spanish culture or origin, regardless of race.

**Independent Study** – A correspondence course in which all communications between the instructor and student is accomplished through mail, email or fax.

**Interactive Video (IVN)** - Two way video system in which the participants can synchronously interact.

**Midwest Higher Ed (MHEC)** - A non-profit regional organization, established by compact statute, to assist Midwestern states in advancing higher education through interstate cooperation and resource sharing. Members are: Illinois, Indiana, Iowa, Kansas, Michigan, Minnesota, Missouri, Nebraska, North Dakota, Ohio, South Dakota, and Wisconsin.

**Native Hawaiian or Pacific Islander** - A person having origins in any of the original peoples of Hawaii, Guam, Samoa, or other Pacific Islands.

**NDUS Duplicated Enrollment** – The sum of all the institutional headcounts. Accounts for duplication of students enrolled on more than one campus.

**New Undergraduate Student Enrollments** – Includes both incoming freshmen and undergraduate transfer students for the reporting term.

**Non Resident Alien** - A citizen or national of the U.S. and who is in this country on a visa or temporary basis and does not have the right to remain indefinitely.

**Not Specified** - Student did not identify with a selected race.

**Part Time** - Undergraduate students enrolled in less than 12 credit hours or graduate and professional students enrolled in less than 9 credit hours (as of the 20th scheduled day of class).

**Professional** - A student who has completed a baccalaureate degree and is enrolled in a post-baccalaureate program leading to a professional degree in law, medicine, or pharmacy.

**Race** - Group or groups with which a person identifies or having origins as identified as valid values for IPEDS reporting.

**SCH** - Scheduled Credit Hours. The sum of all course credit hours in which students are enrolled as of the 20th day of classes.

**Students Enrolled in Developmental and Degree Credit** - Students who are enrolled in both developmental and degree credit courses during the reporting term.

**Synchronous Internet** - Internet based class where instructor and students are online at the same time in order to interact.

**Transfer** - A student entering an institution for the first time but known to have previously attended a postsecondary institution at the same level. This student may transfer with or without credit.

**Two or more races** - A person having more than one origin.

**Unduplicated Headcount Enrollment** – A student counted as one NDUS enrollment in degree credit courses as of the 20<sup>th</sup> scheduled class day.

**Western Exchange (WICHE)** – A regional organization created by the Western Regional Education Compact and adopted in the 1950s by western states. WICHE was created to facilitate resources sharing among the higher education systems of the west. Members are: Alaska, Arizona, California, Colorado, Hawaii, Idaho, Montana, Nevada, New Mexico, North Dakota, Oregon, South Dakota, Utah, Washington, and Wyoming.

**White** - A person having origins in any of the original peoples of Europe, the Middle East, or North Africa.