

NDUS Historical Headcounts for Select Demographics

October 2020



Contents

Student Headcount (with trendline; 1955 to present)	2
Student Headcount and Full time Equivalencies (FTE) (1960 to present)	3
Full time Equivalencies (FTE) by Tier (1970 to present).....	4
Full time and Part time Headcount as a Percentage of All Headcount (1970 to present)	5
Full time and Part time Headcounts (1970 to present)	5
Undergraduate and Graduate Headcount (with trendlines; 1969 to present)	6
Undergraduate and Graduate Headcount as a Percentage of All Headcount (1969 to present).....	7
Age Category Headcount as a Percentage of All Headcount (1991 to present).....	8
Beginning Freshmen Headcount (with trendline; 1989 to present).....	9
Transfer-In Student Headcount (with trendline; 1970 to present)	10
North Dakota Student Headcount (with trendline; 1969 to present)	11
North Dakota Student Headcount as a Percentage of All Headcount (with trendline; 1969 to present) ..	11
Minnesota Student Headcount (with trendline; 1969 to present).....	12
Minnesota Student Headcount as a Percentage of All Headcount (with trendline; 1969 to present)	12

Creative Commons

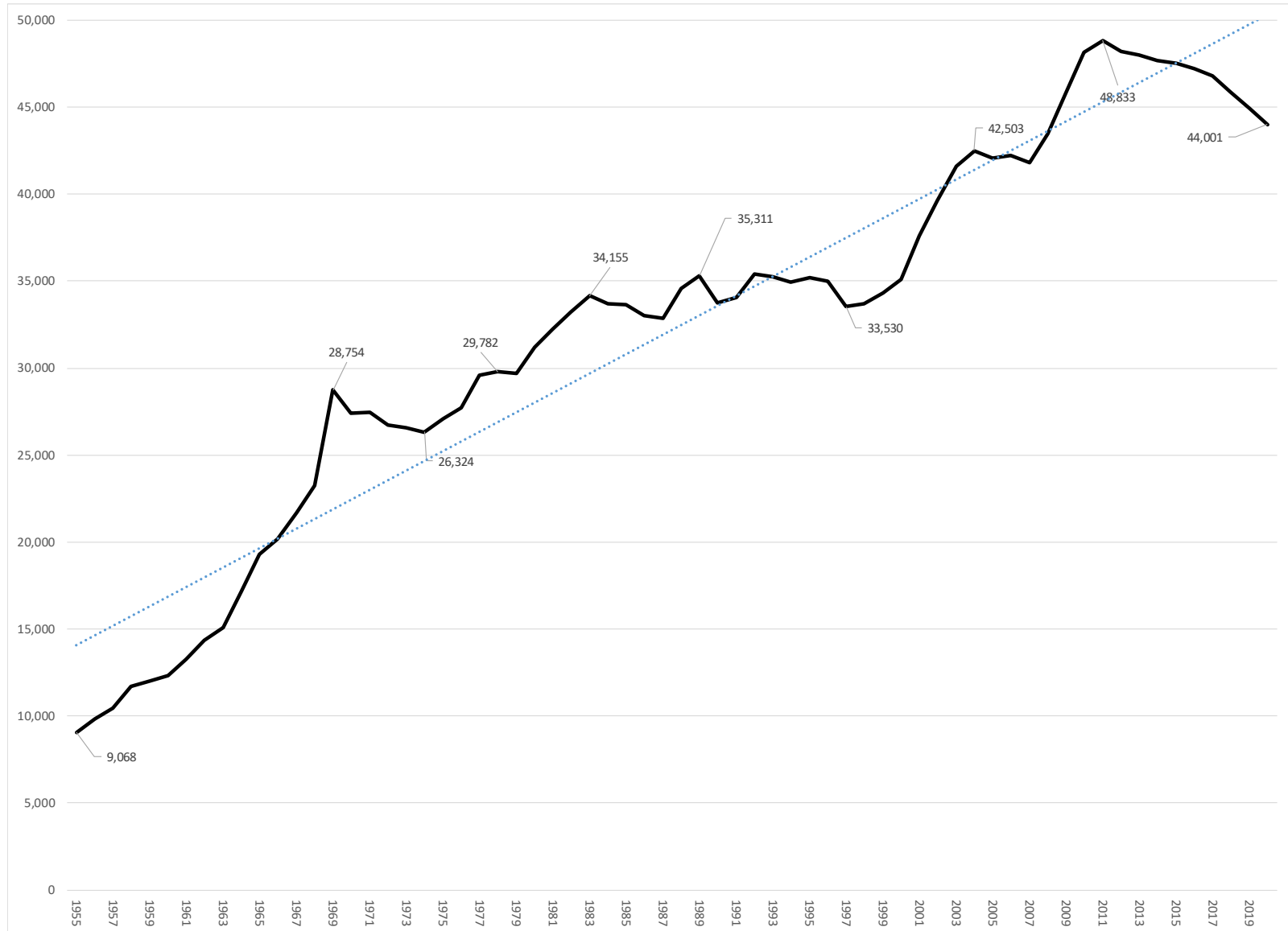
Attribution-NonCommercial-ShareAlike 4.0 International



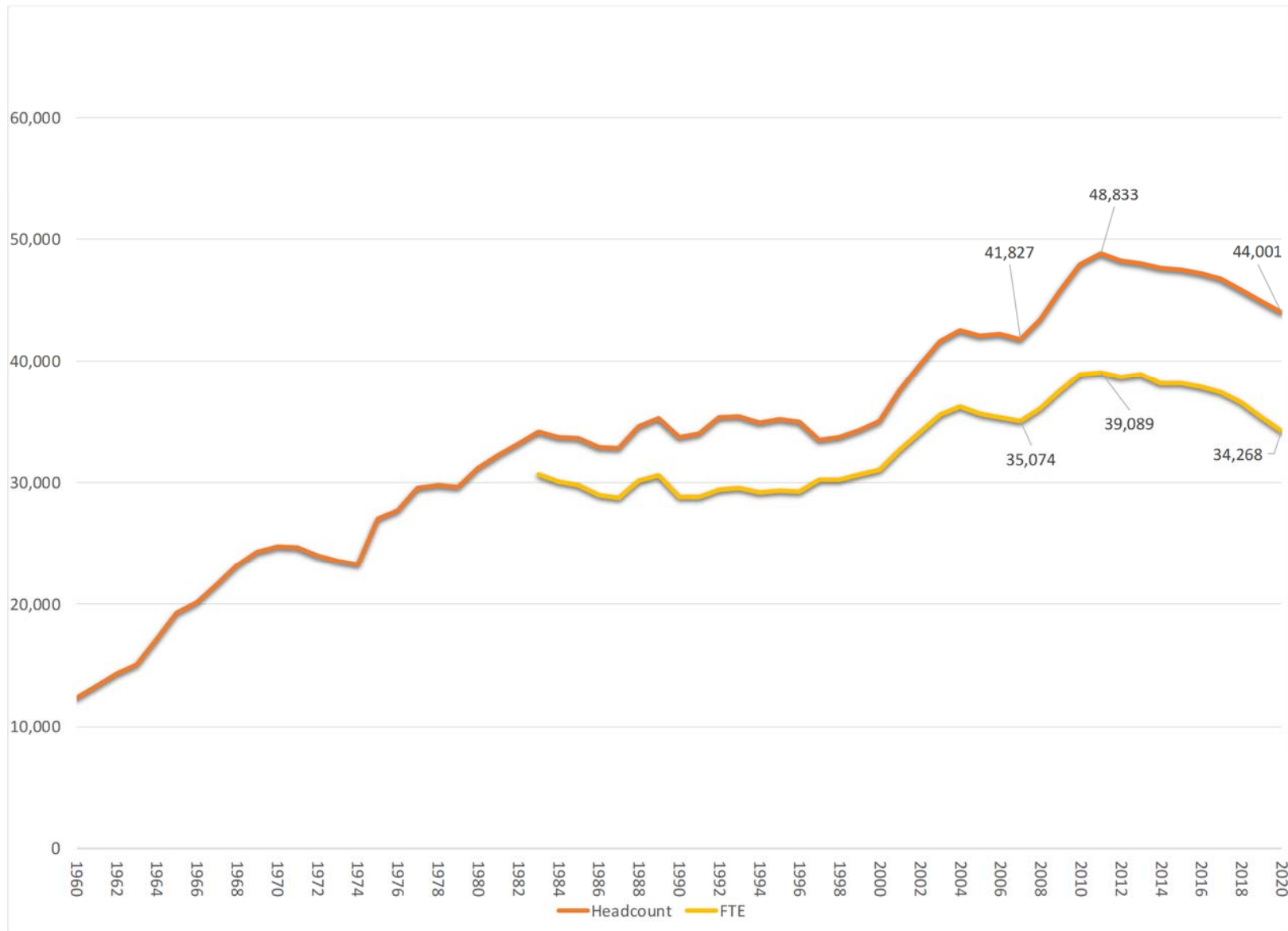
© 2020 North Dakota University System

*Prepared by: Jennifer Weber, PhD
NDUS Institutional Research Office*

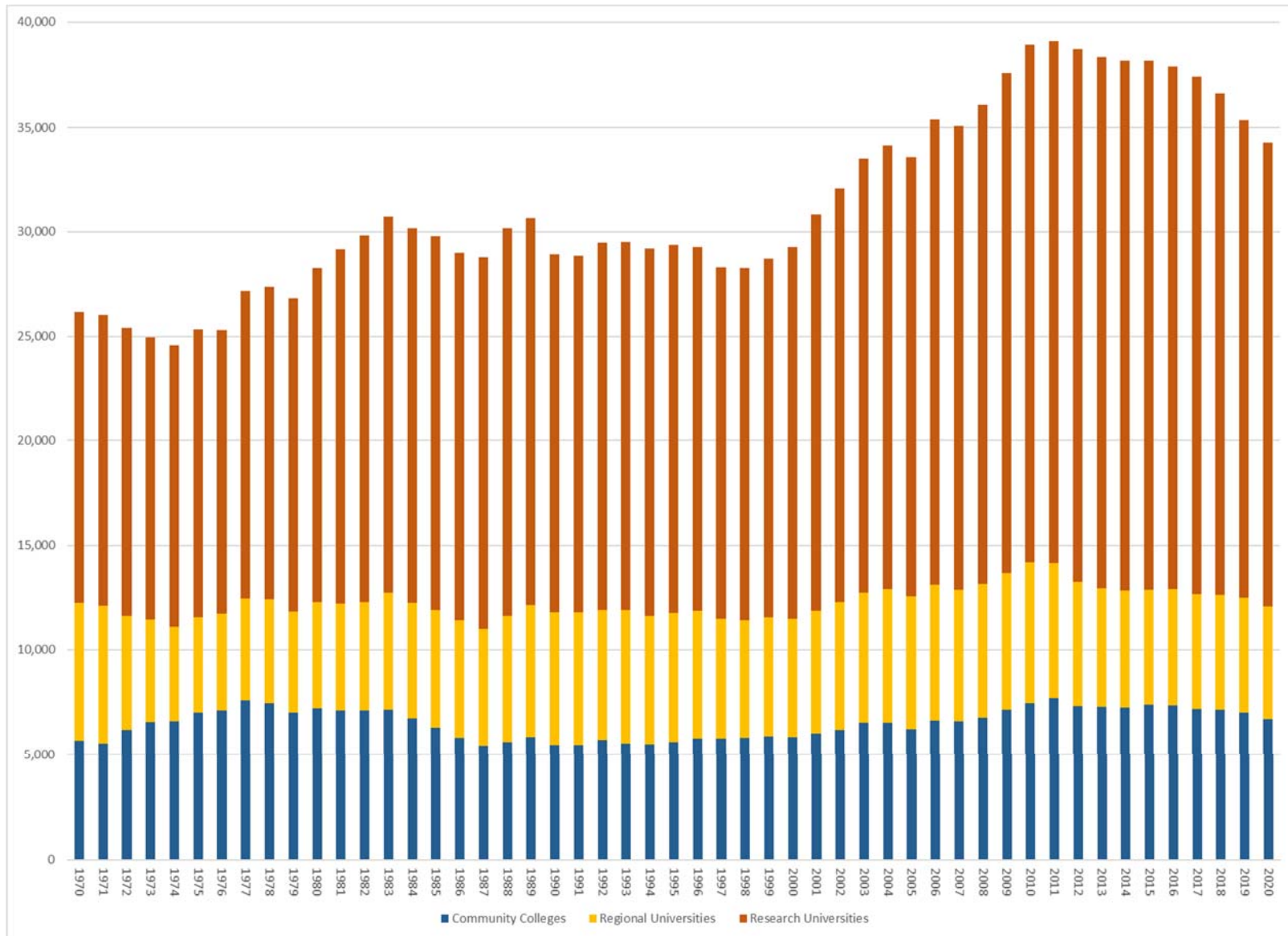
Student Headcount (with trendline; 1955 to present)



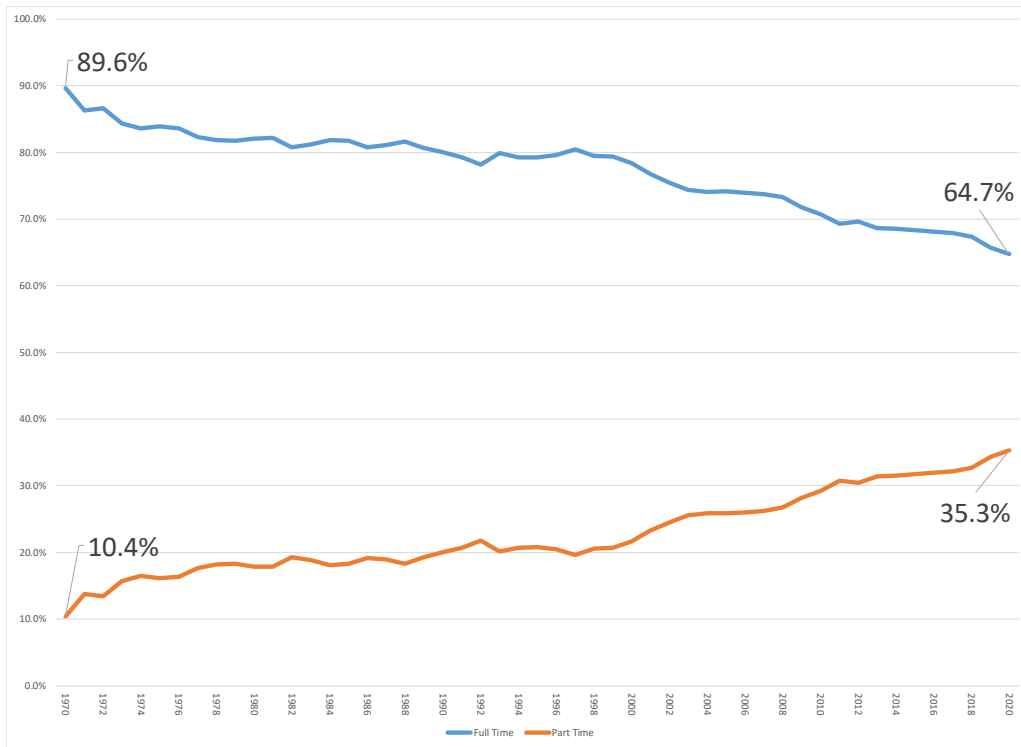
Student Headcount and Full time Equivalencies (FTE) (1960 to present)



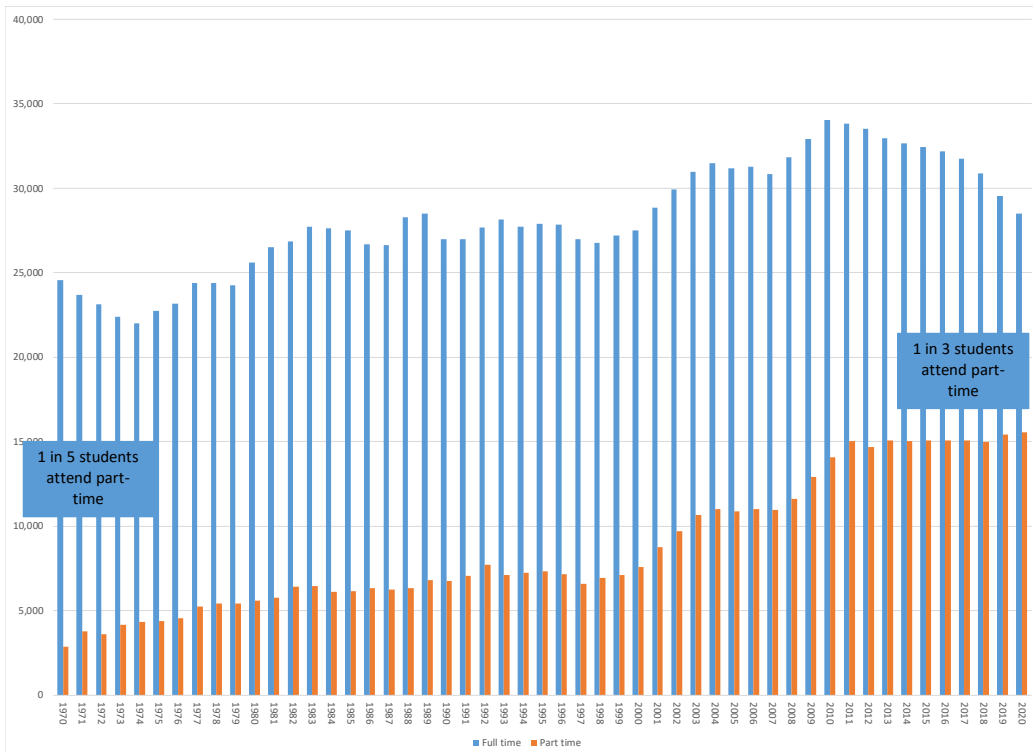
Full time Equivalencies (FTE) by Tier (1970 to present)



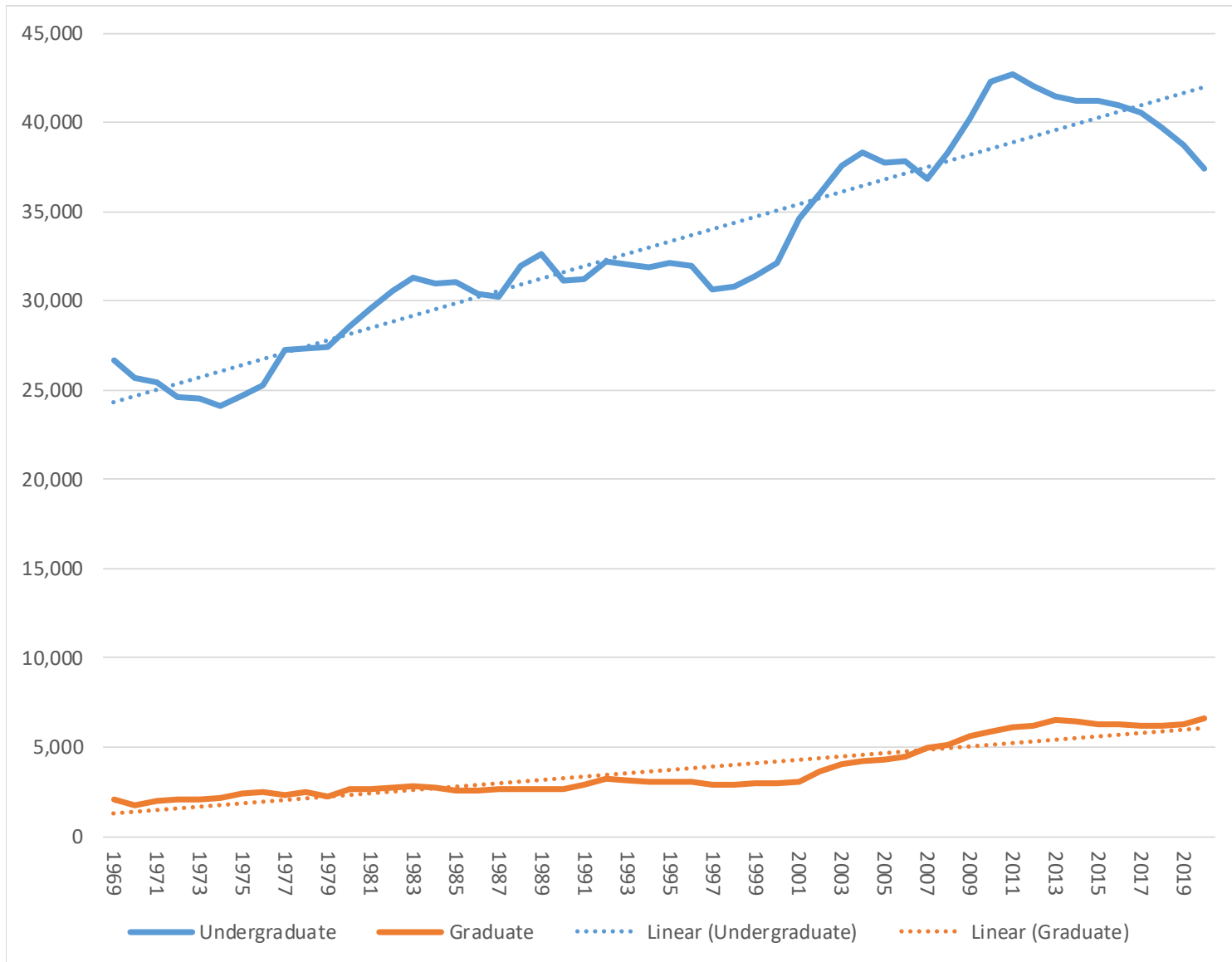
Full time and Part time Headcount as a Percentage of All Headcount (1970 to present)



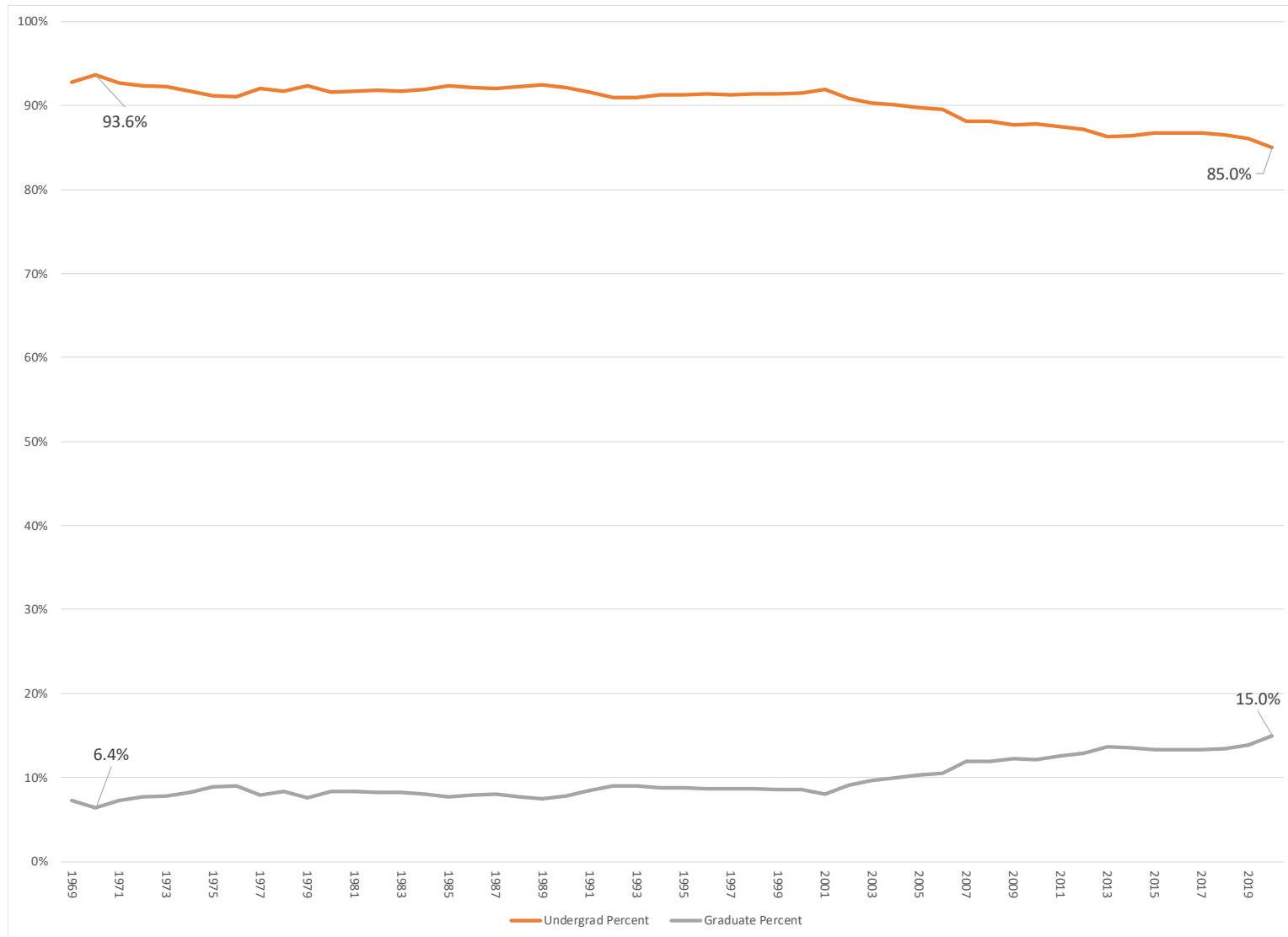
Full time and Part time Headcounts (1970 to present)



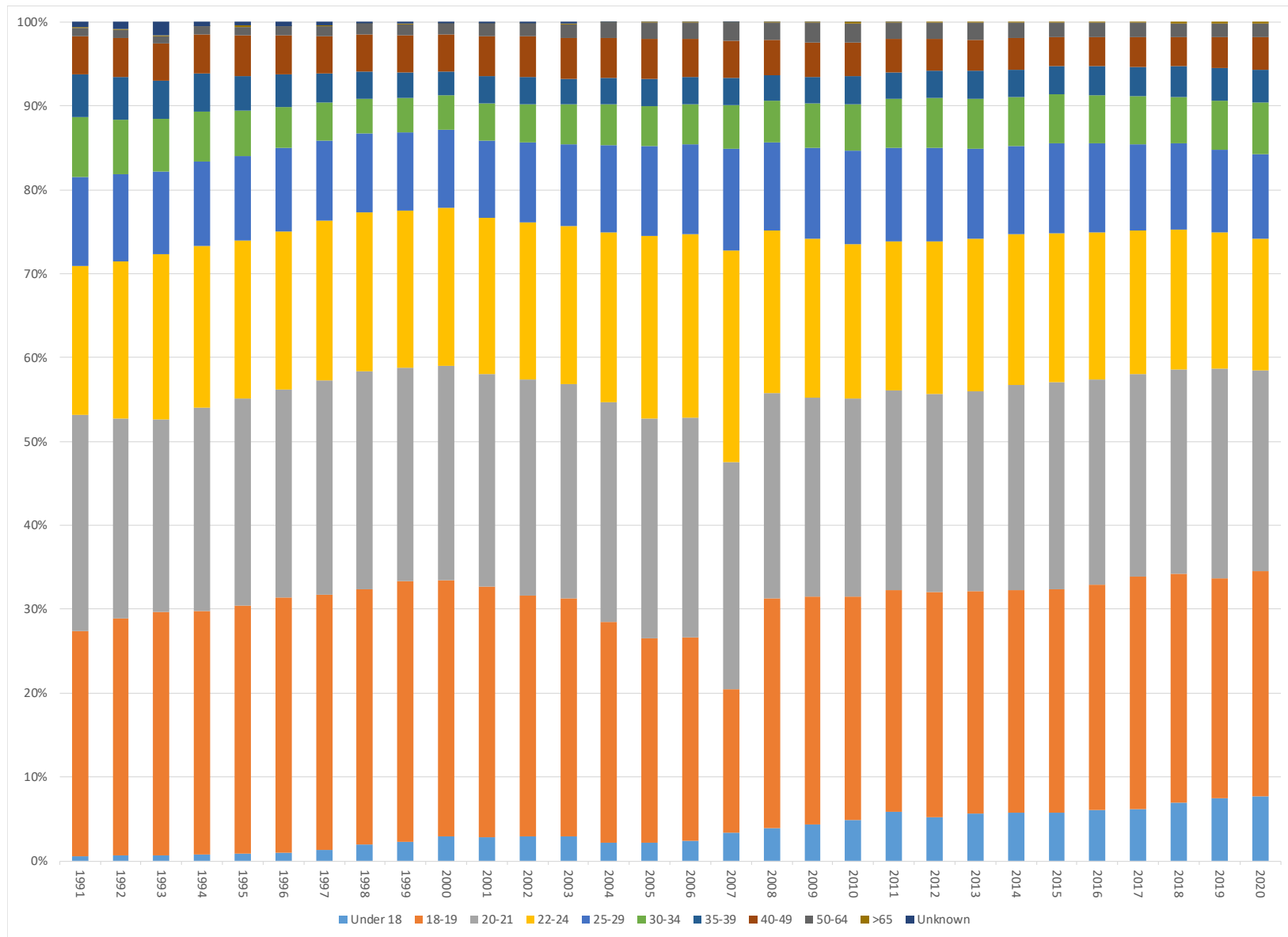
Undergraduate and Graduate Headcount (with trendlines; 1969 to present)



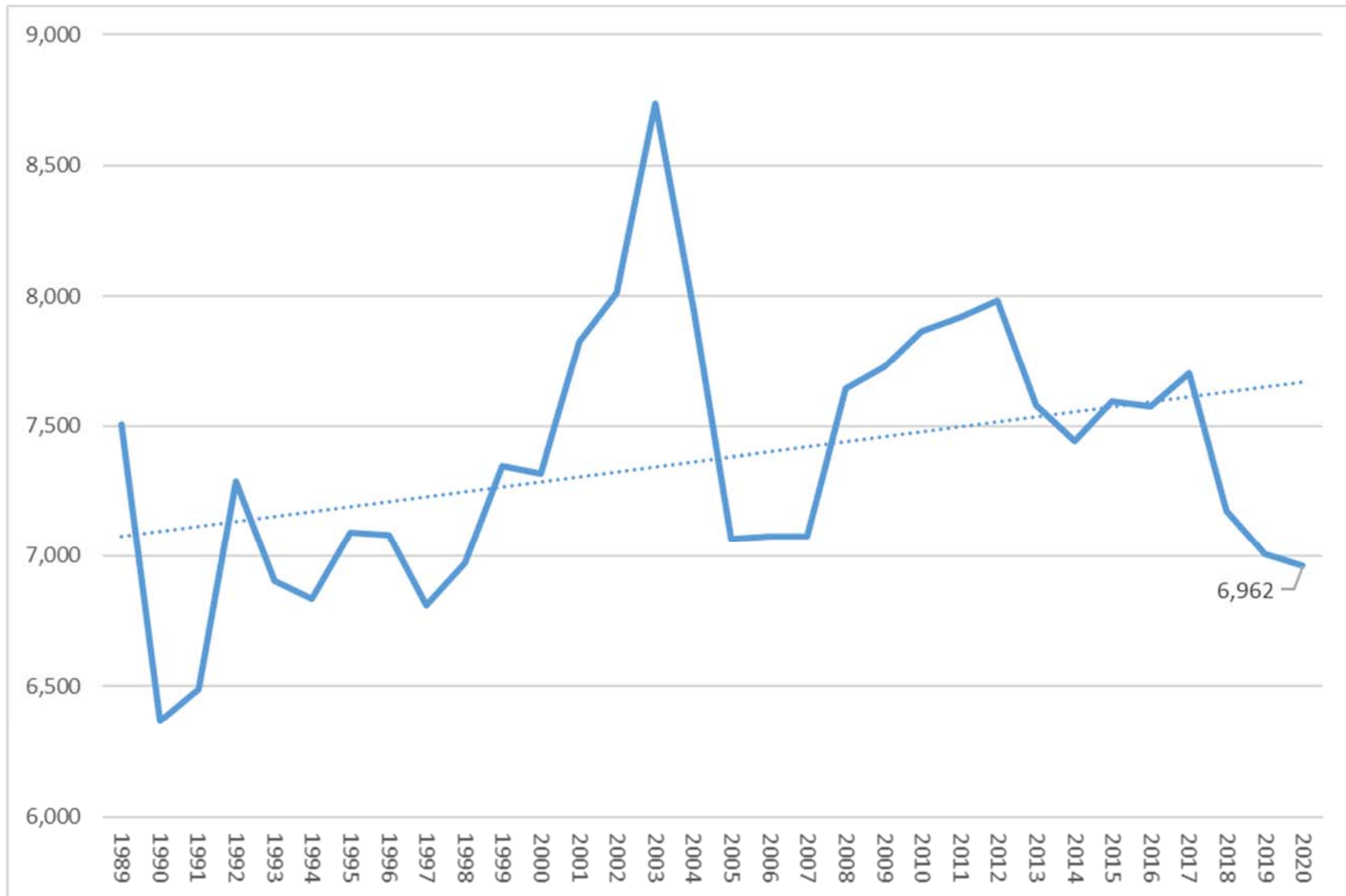
Undergraduate and Graduate Headcount as a Percentage of All Headcount (1969 to present)



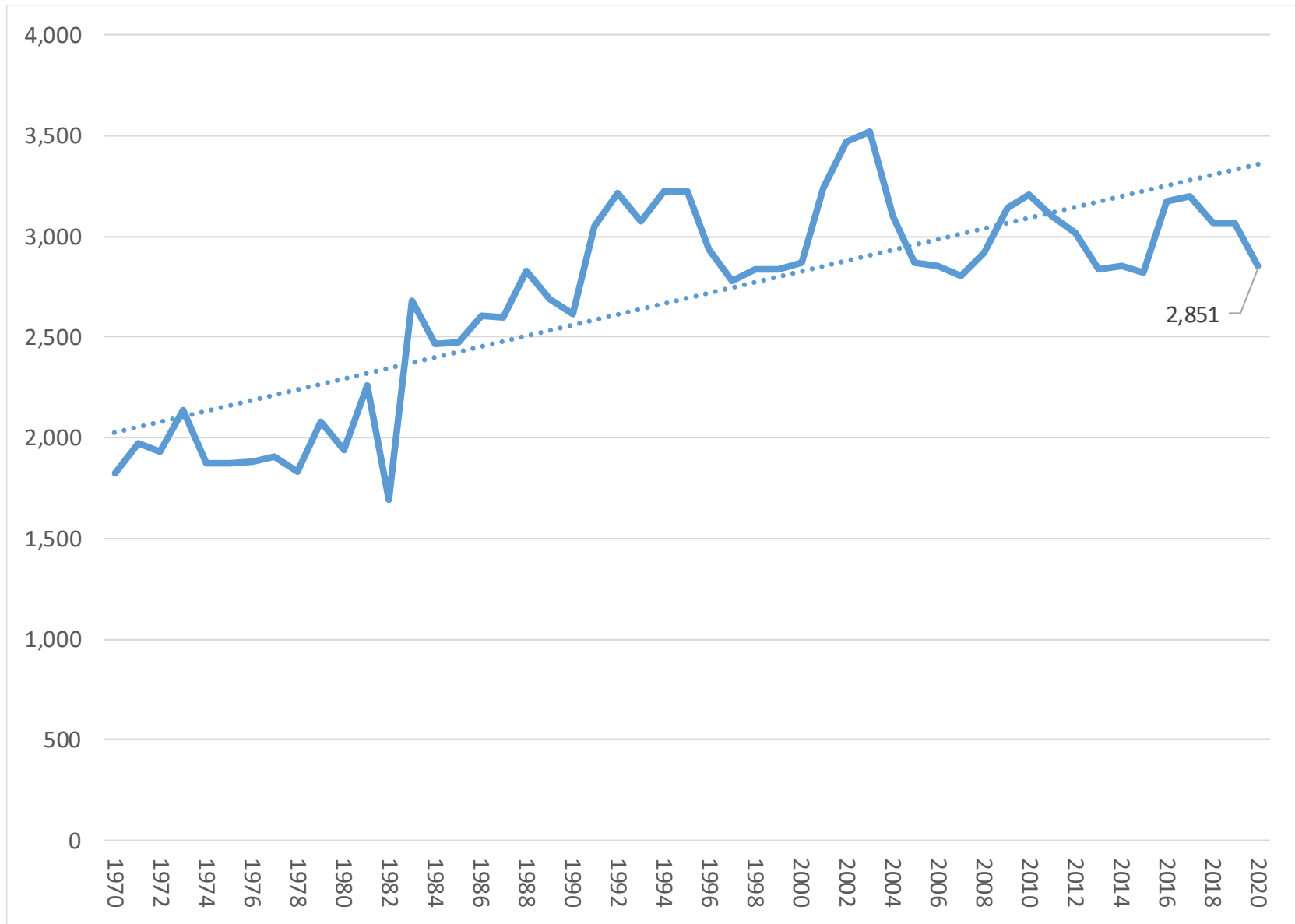
Age Category Headcount as a Percentage of All Headcount (1991 to present)



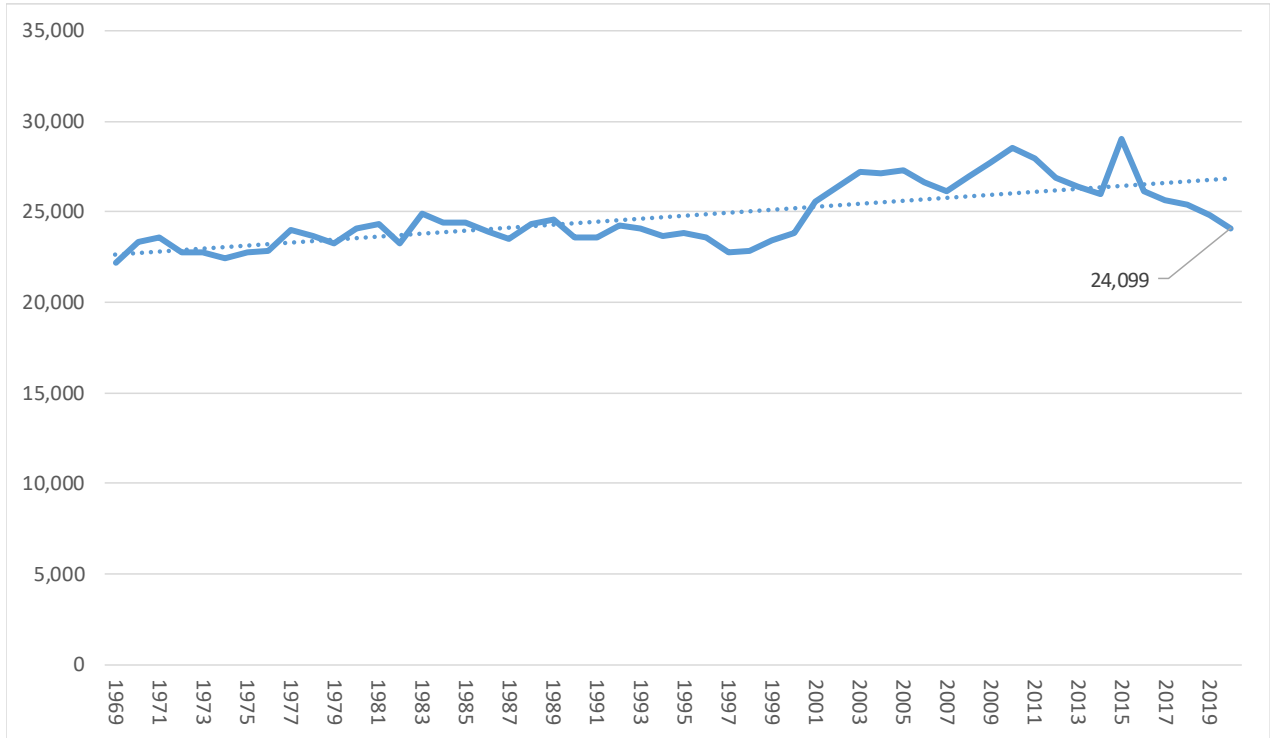
Beginning Freshmen Headcount (with trendline; 1989 to present)



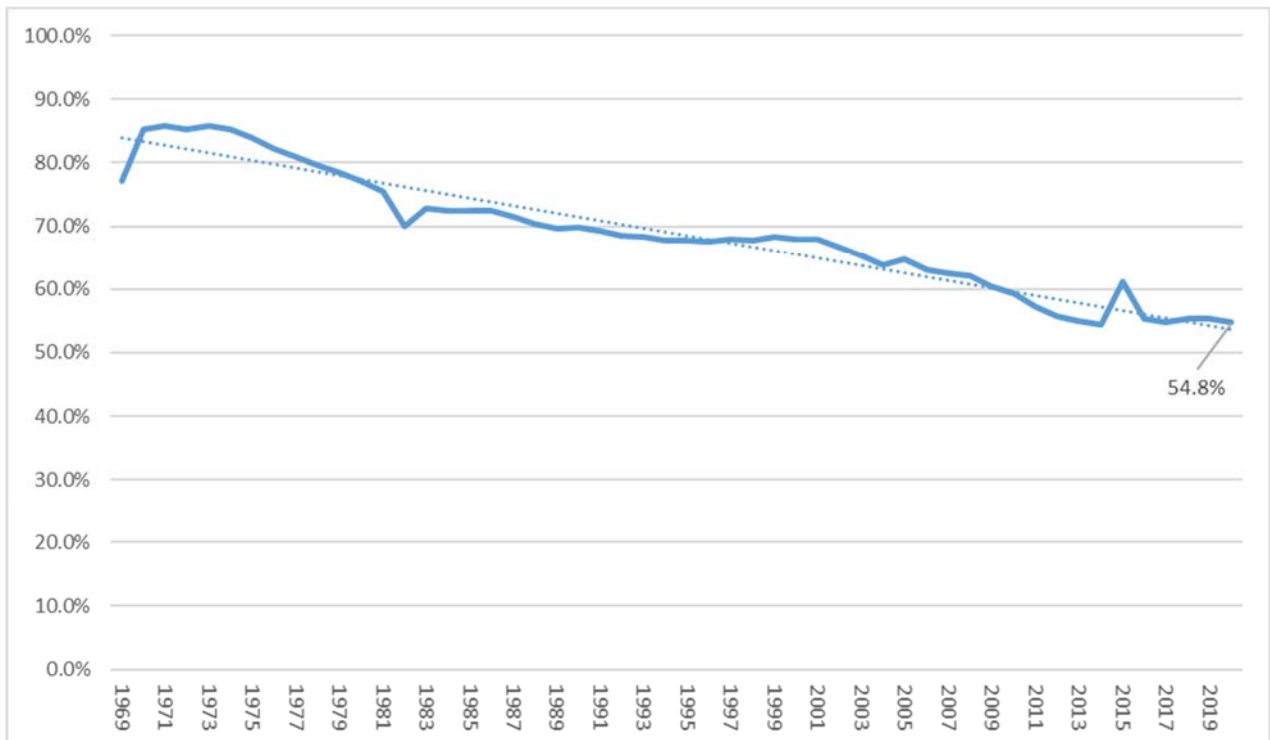
Transfer-In Student Headcount (with trendline; 1970 to present)



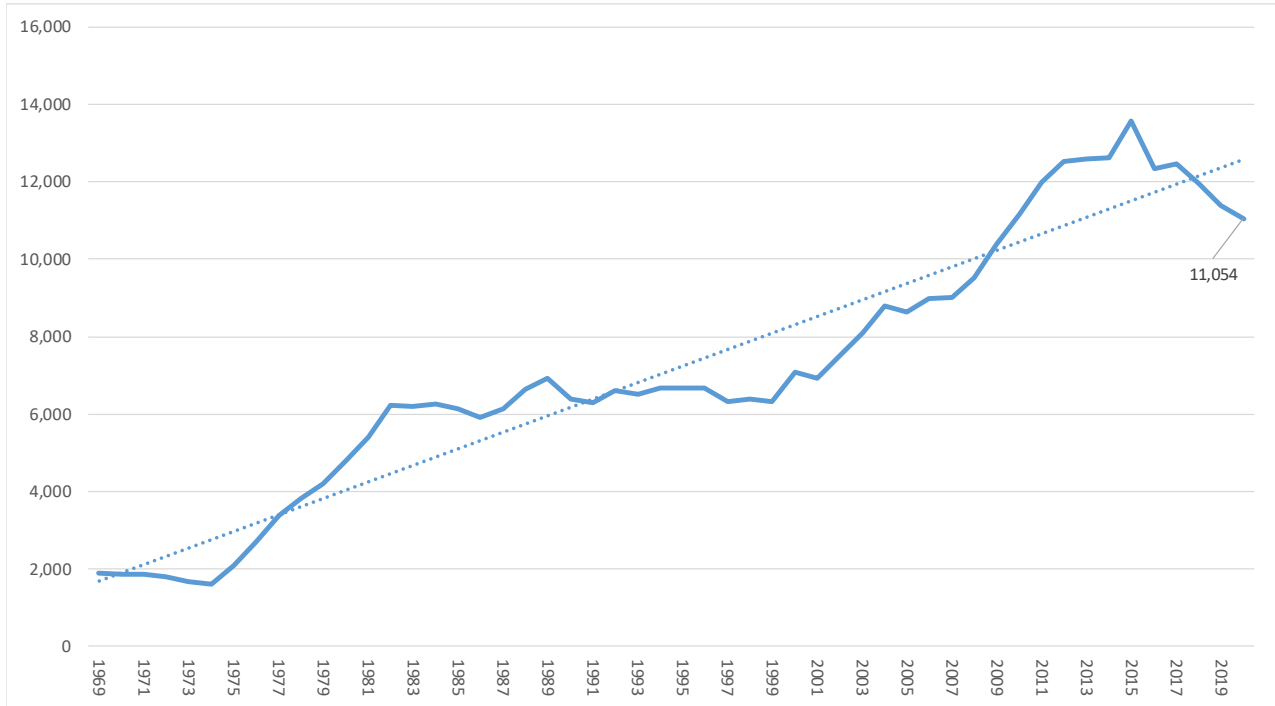
North Dakota Student Headcount (with trendline; 1969 to present)



North Dakota Student Headcount as a Percentage of All Headcount (with trendline; 1969 to present)



Minnesota Student Headcount (with trendline; 1969 to present)



Minnesota Student Headcount as a Percentage of All Headcount (with trendline; 1969 to present)

