



# 2021-22 Annual Enrollment Report

November 2022

600 E Boulevard Department 215  
Bismarck, North Dakota 58505-0230  
Website: [www.ndus.edu](http://www.ndus.edu)

Creative Commons

Attribution-Noncommercial-ShareAlike 4.0 International



© 2022 North Dakota University System

*Report prepared by*

**Jennifer Weber, Ph.D., NDUS Institutional Research**

**Table of Contents**

<b>2021-22 Annual Enrollment Executive Summary</b>	<b>1</b>
<b>Credit Types</b>	<b>1</b>
<b>Course Delivery Modes</b>	<b>1</b>
<b>Duplicated versus Unduplicated Counts</b>	<b>2</b>
<b>Trending Historical Annual Enrollment</b>	<b>3</b>
<b>Table 1: Annual Enrollment Summary</b>	<b>4</b>
<b>Table 2: Annual Degree Credit Headcount by Distance Ed Delivery Methods</b>	<b>5</b>
<b>Table 3: Annual Degree Credit Headcount by All Delivery Methods</b>	<b>6</b>
<b>Table 4: Annual Non-Degree Credit Headcount by Distance Ed Delivery Methods</b>	<b>7</b>
<b>Table 5: Annual Non-Degree Credit Headcount by All Delivery Methods</b>	<b>8</b>
<b>Table 6: Annual Degree Credit by Full Time, Part Time, and FTE</b>	<b>9</b>
<b>Table 7: Beginning Freshmen</b>	<b>10</b>
<b>Table 8: New Post Baccalaureate Students</b>	<b>11</b>
<b>Table 9: Transfer Students</b>	<b>12</b>
<b>Table 10: Train ND Non-Credit Coursework &amp; Training</b>	<b>13</b>
<b>Data Sources Used for Reporting</b>	<b>14</b>
<b>Data Definitions</b>	<b>15</b>

## 2021-22 Annual Enrollment Executive Summary

The North Dakota University System *2021-2022 Annual Enrollment Report* is an effort to report system wide, duplicated and unduplicated student headcount by combining degree credit, non-degree credit, and non-credit enrollments across the eleven NDUS institutions for an entire academic year. Non-credit enrollments provided through TrainND, a legislatively established organization powered by the public community colleges whose purpose is to provide customized employee training to North Dakota business and industry, are provided in Appendix 1. The academic year reported in this document is Summer 2021, Fall 2021 and Spring 2022 semesters.

### Credit Types

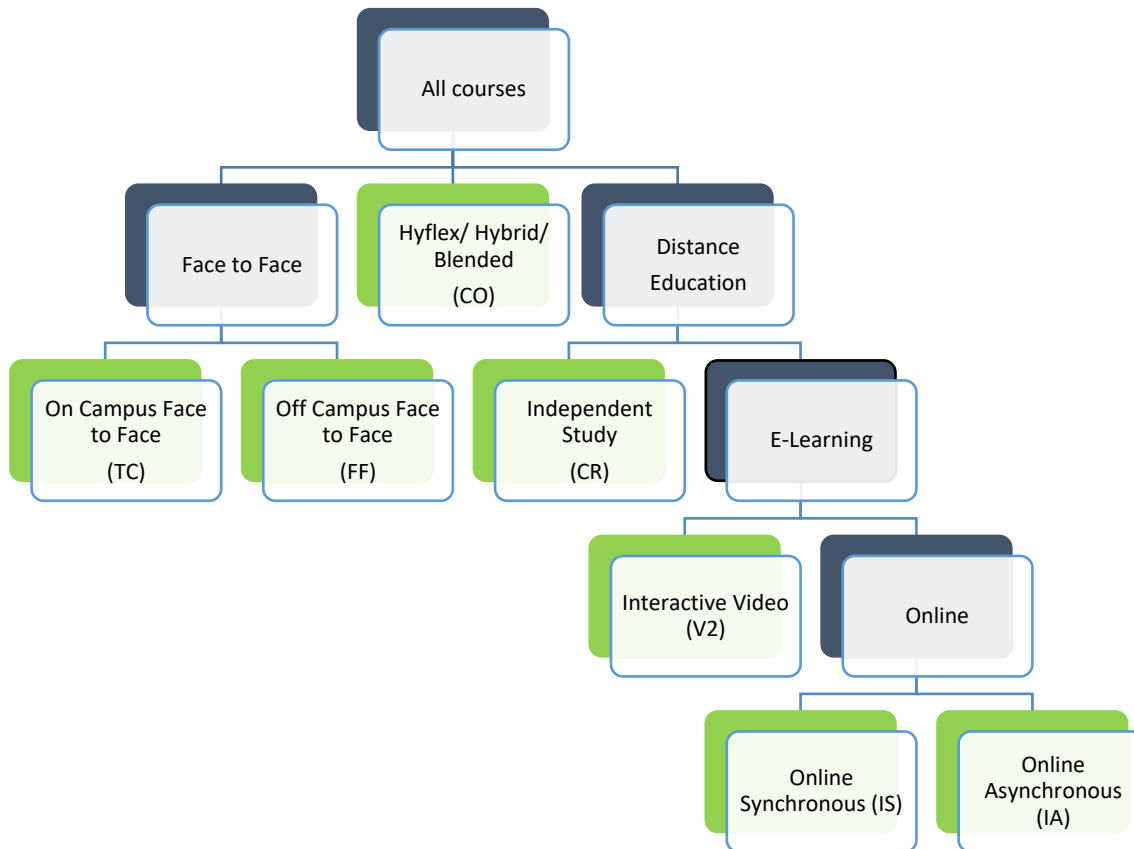
The three credit types reported in this report are defined as follows:

- **Degree Credit** - instructional activities which result in the award of college credit that can be applied toward a college degree.
- **Non-Degree Credit** – instructional activities which result in the award of college credits, which typically cannot be applied toward a college degree. This includes remedial and continuing education coursework.
- **Non-Credit Activity** – institutional activities, including Continuing Education Units (CEU) and TrainND activities, which do not result in award of college credit

Table 1 provides the summative data for annual enrollment. Campus Solutions reporting has allowed identification of 67,182 unduplicated student enrollments across the eleven system institutions. Included in this number are 7,578 first time freshmen, 4,258 new transfer students, and 2,983 new post-baccalaureate (graduate) students, summarized in Tables 7, 8, and 9. Non-credit coursework reported by TrainND (Appendix 1) accounts for an unduplicated headcount of 14,468 across 1005 participating businesses.

In addition to credit types, this report also presents course enrollments by delivery method. Delivery methods include both face to face and distance education delivery as shown in the hierarchy that follows.

### Course Delivery Modes



## Duplicated versus Unduplicated Counts

Totals are reported in the tables in this report as both duplicated and unduplicated. Students are duplicated in institutional counts when they enroll in two separate institutions during the same term, i.e., they are counted at both institutions. Students

are duplicated in course delivery categories when they are enrolled in multiple courses with different delivery methods, i.e., they can be counted as both distance ed and face to face, etc.

Totals are unduplicated by delivery category as well as headcount. Unduplication results in *row or column total* not equal to *the sum of the row or column categories* in cases where students take course by more than one delivery method, or in *NDUS headcount total* not equal to *the sum of institutional headcount totals* in cases where students attend more than one institution.

### Trending Historical Annual Enrollment

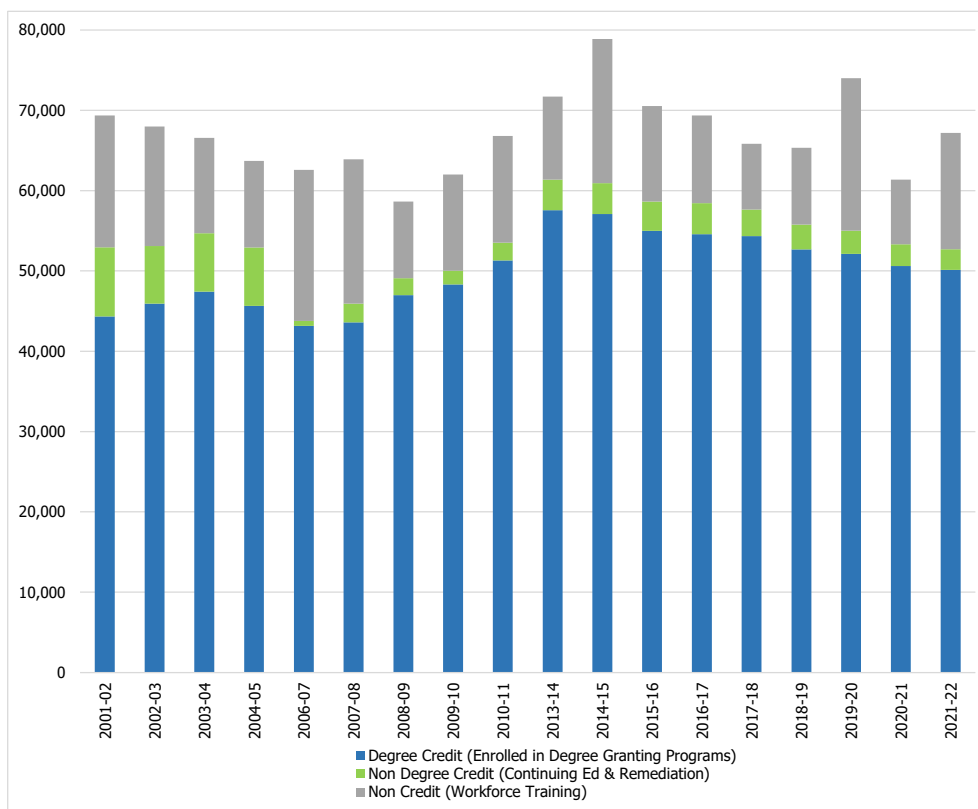


Chart 1 – Trending Historical Annual Enrollment

**Table 1: Annual Enrollment Summary**

<b>Institution</b>	<b>Degree Credit<sup>2</sup> Headcount</b>	<b>Non Degree Credit<sup>14</sup> Headcount</b>	<b>Non Credit<sup>13</sup> Headcount</b>	<b>Institution Total</b>
BSC	4,580	445	3,067	8,092
DCB	1,457	233		1,690
LRSC	2,365	117	1,753	4,235
NDSCS	3,411	555	1,121	5,087
WSC	1,280	127	8,527	9,934
<b>Community College Total</b>	<b>13,093</b>	<b>1,477</b>	<b>14,468</b>	<b>29,038</b>
DSU	1,715	135		1,850
MaSU	1,446	99		1,545
MiSU	3,311	134		3,445
VCSU	2,042	47		2,089
<b>Regional University Total</b>	<b>8,514</b>	<b>415</b>		<b>8,929</b>
NDSU	13,637	397		14,034
UND	17,368	317		17,685
<b>Research University Total</b>	<b>31,005</b>	<b>714</b>		<b>31,719</b>
<b>NDUS Total Unduplicated<sup>22</sup></b>	<b>50,132</b>	<b>2,582</b>	<b>14,468</b>	<b>67,182</b>

**Table 2: Annual Degree Credit Headcount by Distance Ed Delivery Methods**

Institution	Independent Study <sup>11</sup>	E-Learning <sup>5</sup>			Institution Total Duplicated	Institution Total Unduplicated
		Online Synchronous <sup>17</sup>	Online Asynchronous <sup>1 6</sup>	Interactive Video <sup>12</sup>		
BSC	5	207	3,085	218	3,515	3,253
DCB	9		1,020	438	1,467	1,231
LRSC		63	1,426	129	1,618	1,517
NDSCS		7	1,181	95	1,283	1,214
WSC			813	30	843	820
<b>Community College Total</b>	14	277	7,525	910	8,726	8,035
DSU		340	1,125	67	1,532	1,210
MaSU	37	112	1,146	71	1,366	1,175
MiSU	81	699	2,395	68	3,243	2,532
VCSU	13	62	1,336		1,411	1,359
<b>Regional University Total</b>	131	1,213	6,002	206	7,552	6,276
NDSU	372	1,125	8,829		10,326	9,354
UND	510	2,996	13,182		16,688	14,534
<b>Research University Total</b>	882	4,121	22,011	0	27,014	23,888
<b>NDUS Total Duplicated</b>	1,027	5,611	35,538	1,116	43,292	
<b>NDUS Total Unduplicated</b>	1,027	5,597	34,113	1,088		<b>36,615</b>



**Table 3: Annual Degree Credit Headcount by All Delivery Methods**

Institution	Face to Face		Hyflex/ Hybrid/ Blended <sup>10</sup>	Distance Education <sup>3</sup> <small>(from Table 2)</small>	Institution Total Duplicated	Institution Total Unduplicated
	On Campus	Off Campus <sup>15</sup>				
BSC	1,851	952	625	3,253	6,681	4,580
DCB	461	238	84	1,231	2,014	1,457
LRSC	337	968	2	1,517	2,824	2,365
NDSCS	1,422	1,919	1,054	1,214	5,609	3,411
WSC	616	363	243	820	2,042	1,280
<b>Community College Total</b>	<b>4,687</b>	<b>4,440</b>	<b>2,008</b>	<b>8,035</b>	<b>19,170</b>	<b>13,093</b>
DSU	1,185	120	154	1,210	2,669	1,715
MaSU	528	98	6	1,175	1,807	1,446
MiSU	2,060	458	962	2,532	6,012	3,311
VCSU	779	746	210	1,359	3,094	2,042
<b>Regional University Total</b>	<b>4,552</b>	<b>1,422</b>	<b>1,332</b>	<b>6,276</b>	<b>13,582</b>	<b>8,514</b>
NDSU	11,956	1,666	7,669	9,354	30,645	13,637
UND	9,613	425	4,795	14,534	29,367	17,368
<b>Research University Total</b>	<b>21,569</b>	<b>2,091</b>	<b>12,464</b>	<b>23,888</b>	<b>60,012</b>	<b>31,005</b>
<b>NDUS Total Duplicated</b>	<b>30,808</b>	<b>7,953</b>	<b>15,804</b>	<b>38,199</b>	<b>92,764</b>	
<b>NDUS Total Unduplicated</b>	<b>30,685</b>	<b>7,798</b>	<b>15,764</b>	<b>36,615</b>		<b>50,132</b>

**Table 4: Annual Non-Degree Credit Headcount by Distance Ed Delivery Methods**

Institution	Independent Study <sup>11</sup>	E-Learning <sup>5</sup>			Institution Total Duplicated	Institution Total Unduplicated
		Online Synchronous <sup>17</sup>	Online Asynchronous <sup>16</sup>	Interactive Video <sup>12</sup>		
BSC			209		209	209
DCB			92	16	108	108
LRSC			38		38	38
NDSCS			171		171	171
WSC			26		26	26
<b>Community College Total</b>			536	16	552	552
DSU		1	36		37	36
MaSU			21		43	21
MiSU			43			43
VCSU						
<b>Regional University Total</b>		1	100		101	100
NDSU			65		65	65
UND			76		76	76
<b>Research University Total</b>			141		141	141
<b>NDUS Total Duplicated</b>		1	777	16	794	
<b>NDUS Total Unduplicated</b>		1	773	16		<b>789</b>

**Table 5: Annual Non-Degree Credit Headcount by All Delivery Methods**

Institution	Face to Face		Hyflex/ Hybrid/ Blended <sup>10</sup>	Distance Education <sup>3</sup> (from Table 4)	Institution Total Duplicated	Institution Total Unduplicat
	On Campus	Off Campus <sup>15</sup>				
BSC	241		95	209	545	445
DCB	139	26		108	273	233
LRSC	51	34		38	123	117
NDSCS	371	92	18	171	652	555
WSC	107			26	133	127
<b>Community College Total</b>	909	152	113	552	1,726	1,477
DSU	78		42	36	156	135
MaSU	88				88	99
MiSU	95			43	138	134
VCSU	47				47	47
<b>Regional University Total</b>	308		42	100	450	415
NDSU	339		2	65	406	397
UND	242			76	318	317
<b>Research University Total</b>	581		2	141	724	714
<b>NDUS Total Duplicated</b>	1,798	152	157	793	2,900	
<b>NDUS Total Unduplicated</b>	1,785	152	157	789		<b>2,582</b>

**Table 6: Annual Degree Credit by Full Time, Part Time, and FTE**

Institution	Summer 2021*			Fall 2021			Spring 2022		
	Full Time <sup>7</sup> Enrolled	Part Time <sup>18</sup> Enrolled	Full Time Equivalencies (FTE) <sup>8</sup>	Full Time Enrolled	Part Time Enrolled	Full Time Equivalencies (FTE)	Full Time Enrolled	Part Time Enrolled	Full Time Equivalencies (FTE)
BSC	62	953	450	1,826	1,723	2,390	1,605	1,674	2,165
DCB	14	235	124	351	811	615	322	792	572
LRSC	19	413	181	422	1,199	791	343	1,215	726
NDSCS	11	614	248	1,475	1,327	2,029	1,247	1,381	1,756
WSC	1	155	64	565	343	668	463	591	647
<b>Community College Total</b>	107	2,370	1,066	4,639	5,403	6,493	3,980	5,653	5,865
DSU	4	372	156	990	425	1,154	863	482	1,056
MaSU	2	53	22	622	550	815	541	530	727
MiSU	54	860	426	1,961	875	2,242	1,816	905	2,131
VCSU	8	580	245	826	860	1,090	743	917	1,098
<b>Regional University Total</b>	68	1,865	850	4,399	2,710	5,300	3,963	2,834	5,012
NDSU	291	3,363	1,703	10,024	2,437	10,861	8,834	2,467	9,677
UND	1,065	5,602	3,708	8,795	4,977	10,842	8,132	5,094	10,207
<b>Research University Total</b>	1,356	8,965	5,411	18,819	7,414	21,703	16,966	7,561	19,884
<b>NDUS Total</b>	1,531	13,200	7,327	27,857	15,527	33,496	24,909	16,048	30,762

\*Per SBHE Policy 440 (v 9/30/2021), when reporting summer enrollment as an individual term, full time undergraduate is defined as students enrolled in 12 or more credits; full time graduate is defined as students enrolled in 9 or more credits. Full time summer FTE is calculated using the undergraduate total credit hours divided by 12; graduate total credit hours divided by 9.

**Table 7: Beginning Freshmen**

<b>Institution</b>	<b>Beginning Freshmen<sup>1</sup></b>		<b>Institution Total</b>
	<b>Fall 2021</b>	<b>Spring 2022</b>	
BSC	773	66	839
DCB	113	16	129
LRSC	173	17	190
NDSCS	692	28	720
WSC	261	22	283
<b>Community College Total</b>	<b>2,012</b>	<b>149</b>	<b>2,161</b>
DSU	269	19	288
MaSU	182	5	187
MiSU	374	22	396
VCSU	187	8	195
<b>Regional University Total</b>	<b>1,012</b>	<b>54</b>	<b>1,066</b>
NDSU	2,491	46	2,537
UND	1,755	59	1,814
<b>Research University Total</b>	<b>4,246</b>	<b>105</b>	<b>4,351</b>
<b>NDUS Total</b>	<b>7,270</b>	<b>308</b>	<b>7,578</b>

**Table 8: New Post Baccalaureate Students**

	New Post Baccalaureate <sup>19</sup> Students			
<b>Institution</b>	<b>Summer 2021</b>	<b>Fall 2021</b>	<b>Spring 2022</b>	<b>Institution Total</b>
DSU	4	28	14	46
MaSU	7	3	5	15
MiSU	38	84	27	149
VCSU	38	29	24	91
<b>Regional University Total</b>	87	144	70	301
NDSU	180	498	281	959
UND	302	1,018	403	1,723
<b>Research University Total</b>	482	1,516	684	2,682
<b>NDUS Total</b>	569	1,660	754	2,983

**Table 9: Transfer Students**

Institution	New Transfer <sup>21</sup> Students			Institution Total
	Summer 2021	Fall 2021	Spring 2022	
BSC	54	238	132	424
DCB	27	85	35	147
LRSC	32	89	30	151
NDSCS	25	156	54	235
WSC	5	52	21	78
<b>Community College Total</b>	143	620	272	1,035
DSU	26	149	42	217
MaSU	35	122	46	203
MiSU	54	236	104	394
VCSU	16	97	44	157
<b>Regional University Total</b>	131	604	236	971
NDSU	63	556	187	806
UND	178	893	375	1,446
<b>Research University Total</b>	241	1,449	562	2,252
<b>NDUS Total</b>	515	2,673	1,070	4,258

**Table 10: Train ND Non-Credit Coursework & Training**

NDUS TrainND Annual Report FOR WORKFORCE TRAINING – FY 2022						
		Unduplicated Data				
Accountability Measure		WSC	LRSC	NDSCS	BSC	Total
Number of businesses in the region receiving training	#	761	79	284	605	1,729
Number of companies served with less than 50 employees	#	702	39	196	223	1,160
Number of employees receiving training (Unduplicated)	#	8,527	1753	1121	3067	14,468
Number of employees receiving training (Duplicated)	#	11,019	1972	1930	3935	18,856
Number and percent of businesses requesting repeat or additional training	#	577	41	165	222	1,005
	%	76%	52%	58%	37%	58%
Levels of satisfaction with training events based on results provided by employers and employees receiving training	Businesses	99%	99%	99%	99%	99%
Level of satisfaction of companies with responsiveness of training provided	Businesses	98%	100%	99%	100%	99%
Total Contact Hours of Training Provided	#	70,523	11,474	41,933	82,448	206,378
Revenue generated from training fees	\$	\$3,071,765.36	\$241,674	\$706,246	\$1,084,948	\$5,104,633.31



### Data Sources Used for Reporting

Reporting for all tables and charts comes from Campus Solutions> Student Reporting.

The following table outlines the specific enrollment report used for each table/chart:

Table 1	NDU203CA-Annual Degree Credit Headcount by All Delivery Methods NDU203CC-Annual NonDegree Headcount by All Delivery Methods	Terms: 2140, 2210, 2230
Table 2	NDU203CB-Annual Degree Credit Headcount by E-Learning Delivery	Terms: 2140, 2210, 2230
Table 3	NDU203CA-Annual Degree Credit Headcount by All Delivery Methods	Terms: 2140, 2210, 2230
Table 4	NDU203CD-Annual NonDegree Headcount by E-Learning Delivery	Terms: 2140, 2210, 2230
Table 5	NDU203CC-Annual NonDegree Headcount by All Delivery Methods	Terms: 2140, 2210, 2230
Table 6	NDUH2SRA-Headcounts and FTE Enrollments	Terms: 2140, 2210, 2230
Table 7	NDUH2SRK-Compliance Report	Terms: 2210, 2230
Table 8	NDUH2SRK-Compliance Report	Terms: 2140, 2210, 2230
Table 9	NDUH2SRK-Compliance Report	Terms: 2140, 2210, 2230
Appendix Table 1	Train ND Annual Report	Term: FY22
Appendix Table 2	NDUS Annual Enrollment Reports	Terms: 2001-02 to present

## Data Definitions

#	Term	Definition
1	Beginning Freshmen (FYR)	A full-time or part-time student attending for the first time as a freshman. This is a calculated value in Report D of the census enrollment reporting. For the Fall semester, this value does include the students who started in the summer. Because part-time students are included, this number is not the same as the IPEDS first-time full-time count.
2	Degree Credit (DC)	Instructional activities which result in the award of college credit that can be applied toward a college degree.
3	Distance Education (DE)	An academic program or institutional-approved credit course that uses one or more technologies to deliver instruction to students who are separated from the instructor and to support regular and substantive interaction between the students and the instructor synchronously or asynchronously. Distance education delivery modes includes the following (parentheses indicate coding of these courses in the NDUS student information system): <ol style="list-style-type: none"> <li>a. Online synchronous (IA)</li> <li>b. Online asynchronous (IS)</li> <li>c. Interactive Video (V2)</li> <li>d. Independent Study (CR)</li> </ol>
4	Duplicated	An enrollment count in which an individual student may be counted more than once because they are enrolled in more than one course delivery method or on more than one campus.
5	E-Learn/E-Learning	Instruction in an electronic format via the internet. Includes online asynchronous, online synchronous internet, and interactive video.
6	Enrollments	A single enrollment constitutes a single student enrolled in one course or institution. One student may carry more than one enrollment per term.
7	Full Time (FT)	Undergraduate students enrolled in 12 or more credit hours or graduate and professional students enrolled in 9 or more credit hours (as of the 20th scheduled day of class). For summer session, full time is 12 or more credits for undergraduate and 9 or more credits for graduate and professional (SBHE policy 440.1).

8	Full Time Equivalent (FTE)	On a semester basis means undergraduate total credit hours divided by 15; graduate total credit hours divided by 12. Full-time equivalency on an annual basis means undergraduate total credit hours divided by 30; graduate total credit hours divided by 24. Every professional student is counted as one FTE student. When measured during a single summer term, undergraduate total credit hours divided by 12; graduated total credit hours divided by 9. Every professional student is counted as one FTE.
9	Headcount Enrollment (HC)	The number of individual students enrolled in credit courses, regardless of credit load.
10	Hyflex/Hybrid/Blended (CO)	A form of instruction that includes students from different locations and/or environments (face-to-face, online, IVN, etc.) for synchronous and/or asynchronous instruction. In Hyflex delivery each class session is offered in person and by distance delivery, and students can decide by which method to participate.
11	Independent Study (CR)	Instruction is provided in a self-study, self-paced format where the instructor and student mutually establish method(s) of communication.
12	Interactive Video (IVN)	A video and audio communications session between two or more remote sites with live, animated image transmission and display. This connection allows for both the faculty and students to be seen and heard by each other.
13	Non-Credit Activity	Institutional activities, including Continuing Education Units (CEU) and TrainND activities, which do not result in award of college credit.
14	Non-Degree Credit	Instructional activities which result in the award of college credits, which typically cannot be applied toward a college degree.
15	Off Campus Face-to-face (FF)	Describes the traditional classroom setting where the instructor and students are physically located in the same place in an off-campus location and may incorporate the use of multiple supportive technologies as appropriate.
16	Online Asynchronous (IA)	Online instruction occurring independent of time or location.
17	Online Synchronous (IS)	Online instruction occurring independent of location, but at the same time (real time).
18	Part Time (PT)	All students enrolled in courses for credit but less than full-time.
19	Post Baccalaureate	Students who have earned a bachelor's degree and are enrolled in courses at the graduate level. This includes traditional graduate students, medical students, law students, and professional students.

20	TrainND	A statewide network of training & courses for the workforce, with office locations at BSC, LRSC, NDSCS, and WSC. <a href="http://trainnd.com/">http://trainnd.com/</a>
21	Transfer (TR)	Undergraduate students who have earned college credit at another postsecondary institution following high school graduation (SBHE Policy 440).
22	Unduplicated	The enrollment count that removes duplicate enrollments of students across institutions or categories, so they are only counted only once. For instance, a student who is enrolled in two institutions at the same time would count as one unduplicated enrollment.

NDUS has standardized data element definitions across information systems. The NDUS data dictionary is located at <https://dataelements.ndus.edu/dataelements.php>